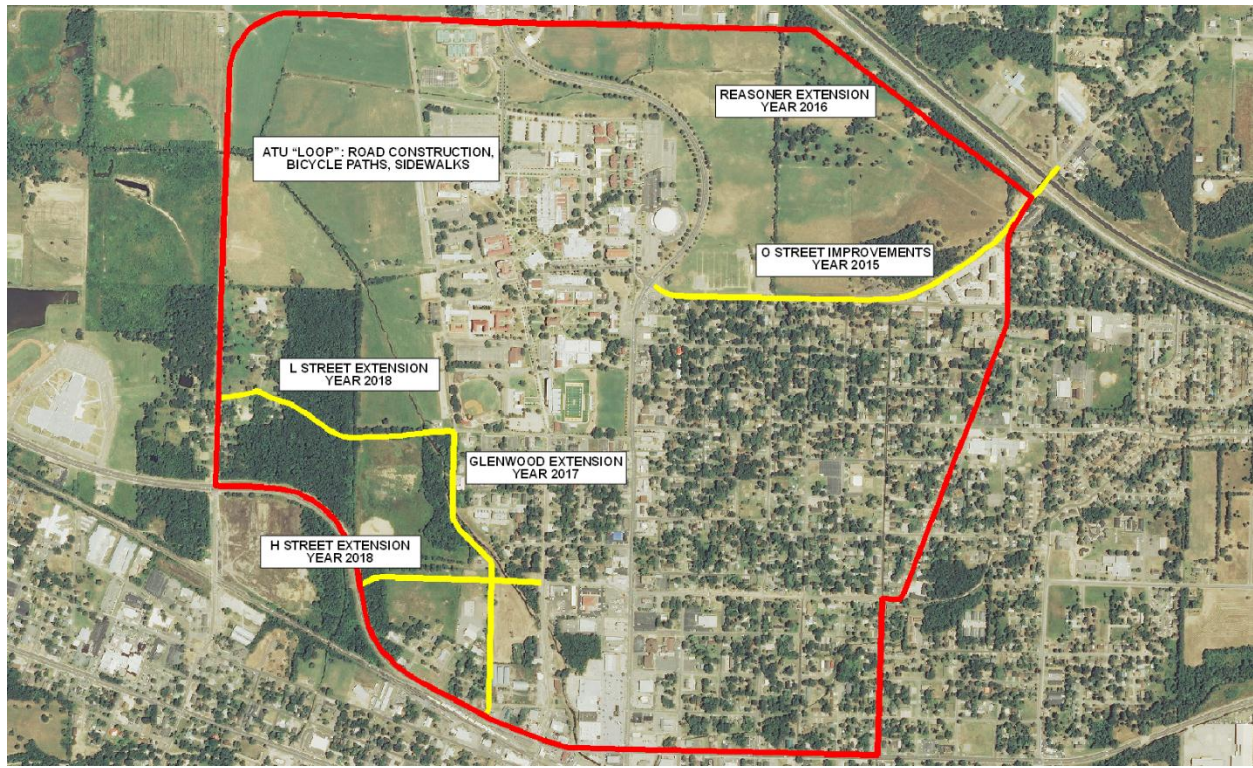


## Map of Street Development and Renovations around the ATU Russellville Campus



Yellow lines: The yellow lines are new road developments or road renovations planned by the City of Russellville. For example, Russellville plans to add sidewalks on both sides of O Street. Also, L Street and Glenwood extensions will create a new exit out of campus at the southwest corner by the Tech baseball field. All roads will have a sidewalk.

Red line: The red line shows a road loop around the Russellville campus. Three-quarters of the loop already exists but Reasoner will be extended in the next year to complete it. This will give drivers a way to avoid the congestion of Route 7 by ATU. It will also promote health and wellness as it will include a bike lane and sidewalks for bikers, walkers and runners.