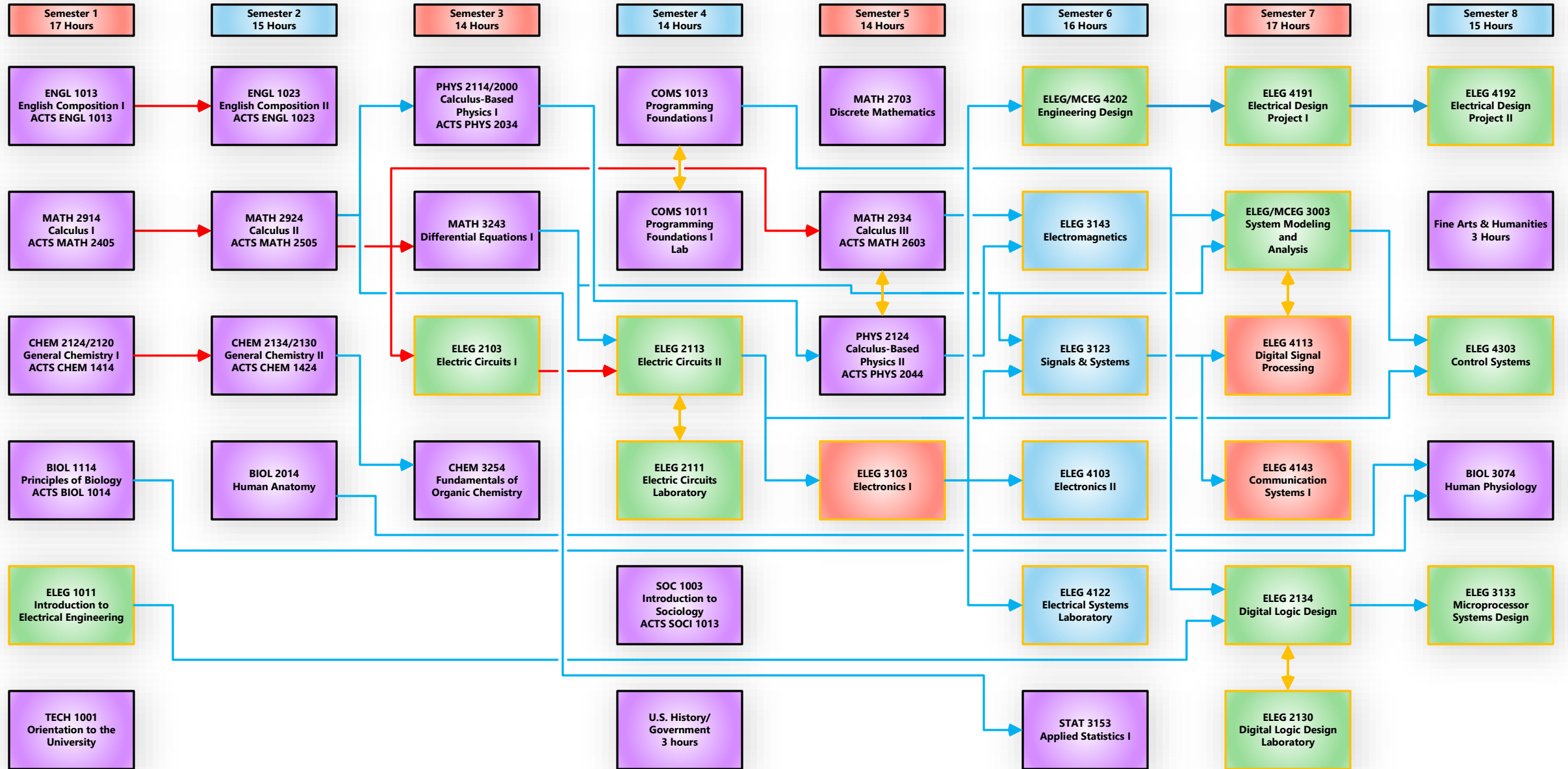


Program: Bachelor of Science in Electrical Engineering

Major: Electrical Engineering with Biomedical Option

Degree Map for 2026-2027



Legend:

- Prerequisite
- C or better required
- ↔ Co-requisite
- ELEG Electrical Engineering courses
- Fall Only Courses available only in the fall semester
- Spring Only Courses available only in the spring semester

These four courses are not required for the Biomedical Option major; however, they are recommended for application to an advanced medical degree program. Please refer to the CHEM and BIOL catalogs for more information.

- BIOL 3034 Genetics
- CHEM 3264/3250 Mechanistic Organic Chemistry
- CHEM 3344 Principles of Biochemistry
- BIOL 4033 Cell Biology