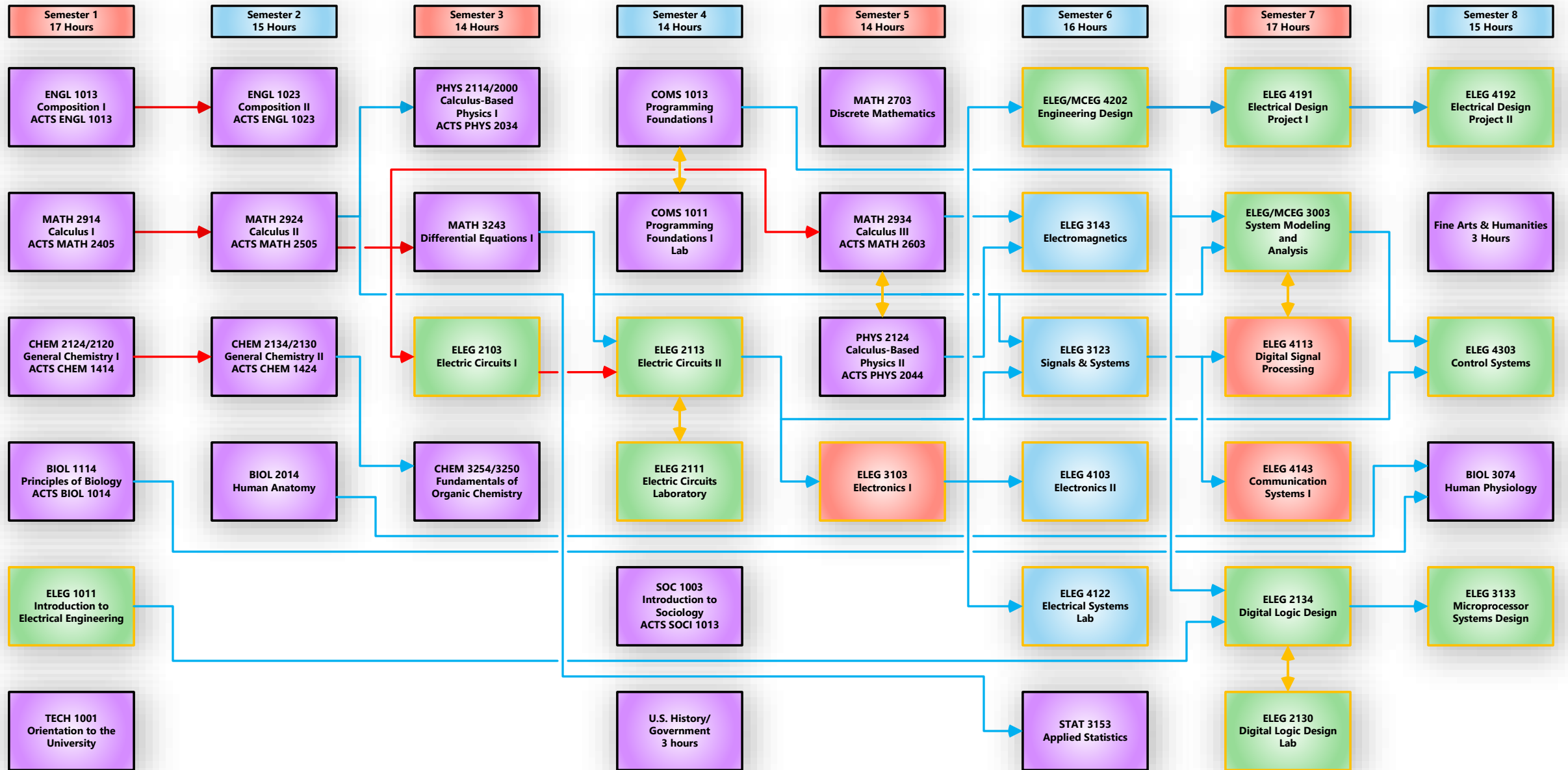


# Program: Bachelor of Science in Electrical Engineering

## Major: Electrical Engineering with Biomedical Option

### Degree Map for 2024-2025



**Legend:**

- Prerequisite
- C or better required
- ↔ Co-requisite
- ELEG ELEG
- Fall Only Fall Only
- Spring Only Spring Only

These four courses are not required for the Biomedical Option major; however, they are recommended for application to an advanced medical degree program. Please refer to the CHEM and BIOL catalogs for more information.

- BIOL 3034 Genetics
- CHEM 3264/3250 Mechanistic Organic Chemistry
- CHEM 3344 Principles of Biochemistry
- BIOL 4033 Cell Biology