

# ASBOA Senior High School Percussion Etude

Dedicated to the students and band directors of the Arkansas School Band and Orchestra Association

J. Ausdemore (ASCAP)

## 2 Mallet Marimba - Set 1

♩ = 100

**Allegretto**

Measures 1-4 of the 2 Mallet Marimba Set 1. The score is in 4/4 time and features a treble and bass clef staff. The treble staff contains rhythmic patterns with dynamic markings *p*, *mf*, *mp*, *f*, and *p*. The bass staff contains a simple accompaniment with dynamic markings *mp* and *mf*.

Measures 5-8 of the 2 Mallet Marimba Set 1. The score is in 4/4 time and features a treble and bass clef staff. The treble staff contains rhythmic patterns with dynamic markings *f*, *mp*, *f*, and *mp*. The bass staff contains a simple accompaniment with dynamic markings *mf*.

Measure 9 of the 2 Mallet Marimba Set 1. The score is in 3/4 time and features a treble and bass clef staff. The treble staff contains a rhythmic pattern with a dynamic marking *f* and a sixteenth-note figure with a '6' below it. The bass staff contains a simple accompaniment.

# ASBOA Senior High School Percussion Etude

Dedicated to the students and band directors of the Arkansas School Band and Orchestra Association

J. Ausdemore (ASCAP)

## Snare Drum – Set 1

$\text{♩} = 114$

(1/2 way) (center to 1/3 way) (simile) —(edge, center, edge)—

3 6 6 5

*mf f mp mf f mp p*

4 (4) 3 (2) 3 3 —(edge to 1/2 way)— —(edge, center, edge)—

*f p mf fp f*

8 **A** (3) (2) 3 (2) (2) —(center, edge, center)— —(center, edge, center)— (center to 1/3 way) (simile)

*p pp < mp f > p < mp f > p < f mp < f mp <*

12 (center to edge) (4) (3) (edge, 1/3 way, edge) (3) (3) —(edge, 1/2 way, edge)— (3) (4) (4) (3)

*f p pp < mp > pp pp mf*

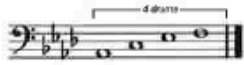
15 (edge to center) **B** 5

*pp p ff*

# ASBOA Senior High School Percussion Etude

Dedicated to the students and band directors of the Arkansas School Band and Orchestra Association

J. Ausdemore (ASCAP)



## Timpani – Set 1

♩ = 124

(muffle Ab on beat 3)

(muffle Ab on beat 3)

(Crossover)

l r l r (l) r l r l r (l) r l r l r l R r l r l r l

4

r L R (r) r l r R l r r l r l r l r l r l

8

r l r r l r l r l R R L R R L R L (r) r l r l r l r l r

12

L r l r l r l r l r (l) r (l) l r l r r

16

r l r l (r)