



ARKANSAS
TECH
UNIVERSITY

College Student Personnel

Graduate College

CONTACT US

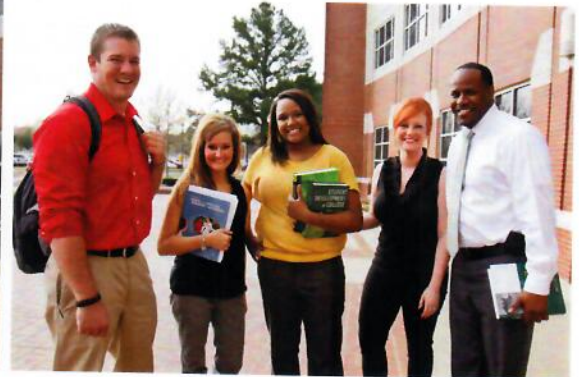
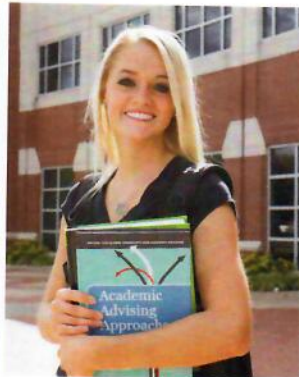
College Student Personnel
Arkansas Tech University

107 Tomlinson Hall
1507 N. Boulder Avenue
Russellville, AR 72801

☎ 479 964-3251
📠 479 880-2231

ABOUT THE PROGRAM

The Master of Science in College Student Personnel (CSP) at Arkansas Tech University is a two-year practitioner-oriented program, philosophically based in college student development and university administration.



IS THE PROGRAM RIGHT FOR ME?

The CSP Program is appropriate for individuals planning to work in the field of student affairs, regardless of their undergraduate major. Current students active in their undergraduate institution, as well as individuals currently working in the field of higher education, are great candidates for the program.

The program is designed to prepare thoughtful, compassionate, first-line student and university service administrators equipped with the knowledge, skills, and dispositions needed to begin a career in the variety of settings in which such services are needed. These areas include, but are not limited to admissions, advising, financial aid, orientation, international

student services, residence life, student programming, alumni affairs, and development.

The CSP Program provides an online option, an in-classroom option, and a mixed online and in-classroom option, making it accessible to individuals, regardless of their location.

The curriculum is aligned with the Council for the Advancement of Standards (CAS) in Higher Education and requires a minimum of 36 credits.

In-state tuition is offered to residents of contiguous Arkansas states and a limited number of graduate assistantships are available for those students pursuing the degree full-time and planning to reside in Russellville or the surrounding area.

Learn more at: www.atu.edu/csp

ADMISSION REQUIREMENTS

1. Meet the minimum requirements for graduate school as outlined by the Arkansas Tech Graduate College
2. A bachelor's degree from a regionally accredited institution
3. Completed graduate school application
4. Minimum undergraduate cumulative GPA of 2.70 or 3.0 on last 30 hours using a 4.0 scale
5. Two letters of recommendation from faculty/staff members at an educational institution attesting to the applicant's ability to work with college students
6. Resume, highlighting any co-curricular experiences and/or student affairs experience
7. A reflective writing sample demonstrating quality graduate writing to the following three (3) short-answer items:
 - a. Define student affairs and how you see yourself contributing to the field.
 - b. Explain how your undergraduate grade point average reflects, or does not reflect, your ability to succeed at the graduate level.
 - c. Briefly describe what faculty and classmates can expect from you in the classroom and/or virtual classroom.

CSP Curriculum

Foundational Course (3 Hours)

CSP 6023 ^{FA, SP, SU} Introduction to CSP

Professional Studies (21 Hours)

CSP 6033 ^{SP} Student Development Theory

CSP 6043 ^{FA, SU} College Students & Subcultures

CSP 6053 ^{FA, SP} Legal Issues in CSP

CSP 6073 ^{FA, SP, SU} Counseling Theories & Helping Skills

CSP 6113 ^{SP} Research Design and Analysis

CSP 6123 ^{FA, SU} Assessment and Evaluation in Higher Education

CSP 6143 ^{FA, SU} Administration in CSP

Supervised Practice (6 Hours)

CSP 6083 ^{FA, SP, SU} Practicum I – Functional Area

CSP 6063 ^{FA, SP} CSP Capstone Seminar

Elective Courses (6 Hours)

CSP 6093 ^{VARIABLE} Practicum II – Functional Area
Required for those not in Higher Ed

CSP 6133 ^{VARIABLE} Ethical Leadership in Higher Education

CSP 6883 ^{SP, SU} Special Problems in CSP : Topic
Special Problems in CSP : Topic

CSP 6153 ^{SP, SU} Advising Student Groups

CSP 6163 ^{SP, SU} Academic Advising

CSP 6173 ^{FA, SU} Career Advising

CSP 6213 ^{FA} Diversity & Inclusion in Student Affairs

CSP 6283 ^{FA, SP, SU} Advising Practicum

FA - Fall Semester SP - Spring Semester SU - Summer Semester
Class rotation may change

Students are encouraged to submit admission materials early, but not later than two weeks prior to the start of the semester as a priority admission date. Applications submitted after the priority deadline will be considered if space is still available in CSP graduate classes.

Conditional admission is available for students who do not meet all the minimum requirements. To be eligible, students must meet the minimum graduate college admission standards or receive a successful appeal from the program director. Students admitted under a conditional status must earn a cumulative 3.0 GPA on the first 12 graduate hours in the program.