

The background of the entire image is a blurred photograph of graduates wearing white academic caps and gowns. The image is overlaid with a semi-transparent teal filter. A bright yellow rectangular box is positioned in the upper center, containing the text 'Norman Career Services' in white. Below this box, the words 'GRADUATE SCHOOL WORKSHOP' are written in large, bold, white capital letters. At the bottom center, there are three small yellow dots arranged horizontally.

Norman Career Services

GRADUATE SCHOOL WORKSHOP

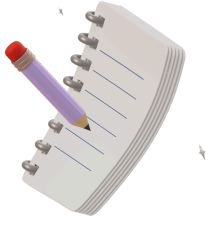




Why pursue a graduate degree



Deciding degree/school



Application components



Graduate degree cost



ATU graduate degrees



Today's Agenda



Why Pursue a Graduate Degree



WHY PURSUE A GRADUATE DEGREE



NECESSARY TO CAREER

Many careers require advance degrees to practice.



PERSONAL GROWTH

Looking to challenge yourself and pursue a personal interest.



PROFESSIONAL/SKILL DEVELOPMENT

Industry requires new skills or you are looking to pivot careers.



Becoming Familiar with Degree Types

MA: Master of Arts

MS/MSc: Master of Science

MEd: Master of Education

MPH: Master of Public Health

MBA: Master of Business Administration

MPA: Master of Public Administration

EdS: Education Specialist

PA: Physician Assistant

Terminal Degrees

MFA: Master of Fine Arts

MD: Doctor of Medicine

DO: Doctor of Osteopathic Medicine

JD: Juris Doctor

PsyD: Doctor of Psychology

PharmD: Doctor of Pharmacy

EdD: Doctor of Education

PhD: Doctor of Philosophy

Choosing the Best Grad Program for You



TIME



ENERGY



MONEY

Choosing the Best Grad Program for You

What to consider when determining if a program fits your personal and professional needs:

- 1.) Location
- 2.) Cost
- 3.) Faculty
- 4.) Program's mission, curriculum, and training specifics
- 5.) Program's connections
- 6.) Program's reputation
- 7.) Individual and family considerations



Application Components



A close-up photograph of a person's hand holding a black graduation cap. The person is wearing a dark blue graduation gown. The background is blurred, showing what appears to be a building with large windows. A yellow vertical bar is on the right side of the image.

Application Components

General Components:

- CV
- Personal statement
- Transcripts
- References
- Online application form
- Application fee
- Writing sample

Additional Components:

- Portfolio
- Diversity statement
- Research statement
- Grade explanations
- Credential evaluations
- Standardized exams

NORMAN CAREER SERVICES

Resume Workshop



FRIDAY, MARCH 31 | 12-1PM
BROWN 134

Join Norman Career Services in helping you start
or update your resume!



@atucareers



career.services@atu.edu

CV vs. Resume

Curriculum Vitae

- Emphasis placed on academic credentials
- Used when applying for positions in academia, fellowships or grants and jobs outside the U.S.
- One main format
- Two to three pages is typical
- Detailed

NORMAN CAREER SERVICES

Resume Workshop



FRIDAY, MARCH 31 | 12-1PM
BROWN 134

Join Norman Career Services in helping you start
or update your resume!



@atucareers



career.services@atu.edu

Constructing Your CV

1. Include your contact information
2. Detail your academic history in reverse-chronological order
3. Record your professional experience
4. Include relevant skills and qualifications
5. List honors and awards
6. Include relevant publications and presentations
7. List your professional associations and affiliations



1st - Intro Section: State your intention and program.



2nd - Personal Section: How have your lived experiences influenced your decision to pursue graduate school.



3rd - Education Section: How has your college experience influenced your decision to pursue graduate school.



Personal Statement Outline

300 words - 3 pages



4th - Professional Section: How have your professional experiences influenced your decision to pursue grad school?



5th - Why Them/Now Section: Why are you applying to the program specifically and why now?



6th - The Future Section: After you earn your degree, what will you do?

*Some personal statements may have specific requirements, so pay attention to those!



Personal Statement Outline



References



- 2-4 references needed
- Variety (professional and academic references)
- Ask their approval first!
- Provide your CV and personal statement
- Schedule reminders

Transcripts & Online Aspects

Transcripts

<https://www.atu.edu/registrar/transcript.php>

TRANSCRIPT REQUEST



Official transcripts are available for in-person pickup free of charge from 8:00 am to 5:00 pm Monday through Friday at the following locations:

RUSSELLVILLE CAMPUS

Office of the Registrar
Brown Hall, Suite 307
105 West O Street
Russellville, AR 72801-2222

OZARK CAMPUS

Office of Student Services
Arkansas Tech University - Ozark Campus
1700 Helberg Lane
Ozark, AR 72949

NOTE: Official transcripts are not issued unless all obligations to the University are satisfied. If you are planning to pick up your transcript in person, please do not place an order online. If you wish for someone to pick your transcript up, list that person's name and that permission is given on your signed request form or from your @atu.edu email and make sure that the person picking up your transcript has a photo ID with them.

[Transcript Request - Electronic PDF or Express Paper Delivery](#)

[Transcript Request - Standard Paper Delivery](#)

[Unofficial Transcripts - for Current Students](#)

At ATU, a graduate degree is more than just a bullet point on your resume - it is an opportunity to dig deeper into your field of study through practicums, assistantships, and real-world experience. We are relentlessly dedicated to helping you earn your graduate degree by offering flexible options including fully-online, in-person, or a blend of the two allowing you to live your life - while working to expand your skills and opportunities.

Your inner drive will fuel everything you do here. Step up to the challenge by applying today.

CHOOSE YOUR APPLICATION CYCLE

Graduate application for admission to Arkansas Tech University is administrated through GradCAS (Centralized Application Service) to help streamline your program research and application process. Choose your cycle below to enter the GradCAS system and get started on your application to ATU. Applications open annually on October 1st for the upcoming academic year (summer through spring).

SPRING 2023 START

[Business](#)
[Engineering](#)
[Nursing](#)
[All Other Graduate Programs](#)

SUMMER 2023, FALL 2023, SPRING 2024 START

[Business](#)
[Engineering](#)

Online App

<https://www.atu.edu/apply-graduate.php>

Application Fee

\$40 - \$150
Waivers



Testing Approaches

Regardless of your approach, be comfortable with your decision

01

Blind

Practice test, but no additional test prep.

02

Partial

1-2 practice tests with few hours a week of test prep.

03

Committed

2+ practice tests and daily test prep.

Scholarships

Where to find them:

- Department level
- College level
- University level
- National/International level
- Professional Associations





Timeline for Fall Deadlines



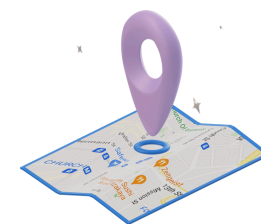
May: Construct program list



June: 1st drafts of CV/personal statements and contact programs/advisors



July: 2nd drafts of CV/personal statements and make checklist of applications



August: Final drafts of CV/statements and identified scholarships



Timeline for Fall Deadlines



September: Contact references, statement edits



October: Online applications and prepare transcripts, statement edits, all tests done



November: Submission



After: Contact program advisors of submission, follow up with references, and check test/transcript submissions

Career Services is Here to Help!



KYLIA STEWART

**Employer Relations
Coordinator**

kstewart20@atu.edu



KRISTEN MERRITT BECK

Assistant Dean

kbeck12@atu.edu



YUSHIA "YOSHI" THAO

Career Counselor

ythao1@atu.edu

ATUTM

Norman Career Services

ATU Graduate Programs



Samantha Meeks

gradrecruiter@atu.edu

Visit Our Website!

