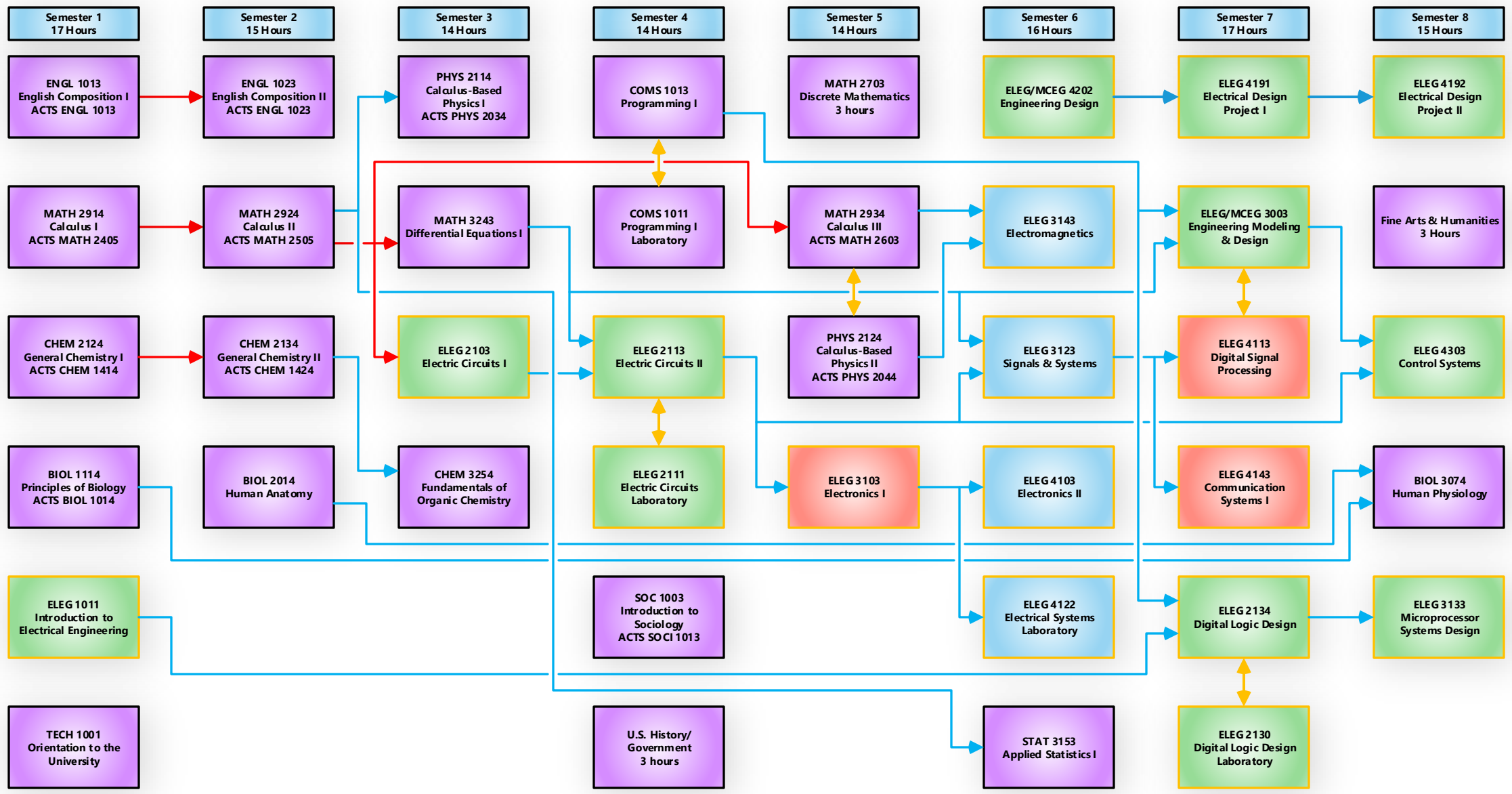


# Program: Bachelor of Science in Electrical Engineering

## Major: Electrical Engineering with Biomedical Option

### Degree Map for 2022-2023



→ Prerequisite     
 → C or better required     
 ↔ Co-requisite     
 ELEG     
 Fall Only     
 Spring Only

BIOL 3034 Genetics     
 CHEM 3264 Mechanistic Organic Chemistry     
 CHEM 3344 Principles of Biochemistry     
 BIOL 4033 Cell Biology

These four courses are not required for the Biomedical Option major; however, they are recommended for application to an advanced medical degree program. Please refer to the CHEM and BIOL catalogs for more information.