

# Emergency Management

Fall 2010



FLASH FLOODING AT THE ALBERT PIKE RECREATION AREA. PICTURE COURTESY OF FOX 16 WWW.FOX16.COM

Flash flooding occurs with astonishing regularity, occurring nearly weekly in the United States. Approximately one hundred people are killed yearly by a flash flood. Flash flooding is the number one cause of death from thunderstorms beating out tornadoes (80) and lightning strikes (50). Unlike a regular flood, flash flooding does not require a saturated ground or rain over an extended period of time. All it takes is enough rain so that natural (creeks and streams) and man-made (storm drains) runoff systems fail. This can vary

## FLASH FLOODING AND THE ALBERT PIKE DISASTER

greatly from place to place. An inch of rain in an hour is not a great deal here in Arkansas, but in a place like Las Vegas it can be deadly. The power of water cannot be underestimated; it only takes 2 feet of moving water to carry away a full size SUV.

In the early morning hours of June 11<sup>th</sup> campers mainly at Albert Pike Recreational Area in the Ouachita National Forest southeast of Mena, were tragically awakened by flood waters of the Little Missouri River encroaching upon the campground. The National Weather Service issued Flash Flood Warnings at 2 am indicating that flash flooding was eminent. By 3:30 am sources in the park had notified officials that 12 people had already lost their lives, and by the end of the day the

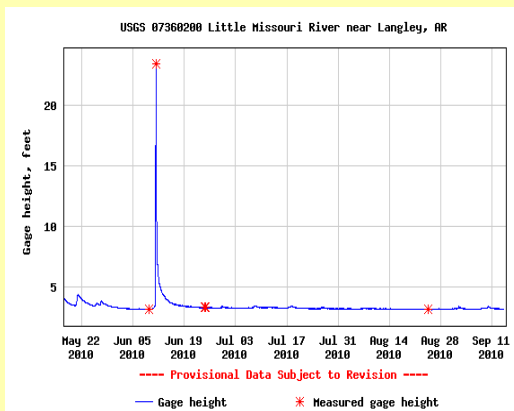
count was 16. The river gage at Caddo Gap, just upstream from the camp ground, registered 3 1/2 feet before flooding crested at 23 1/2 feet, more than 15 feet above flood stage and double the previous record. The power of the rushing water was so great that it carried away full sized RVs, Semis, and chewed up asphalt from the road. What made the Albert Pike flood so disastrous was its location. The recreation area is located along the Little Missouri River which is normally a placid stream fit for fishing and swimming, however the river's location tucked away among the steep sloped mountains of the Southern Ouachita increased the funneling effect seen in river valleys.

*Continued on Page 5*

## NATIONAL WEATHER SERVICE FLASH FLOODING TIPS

- ◆ MONITOR THE NOAA WEATHER RADIO OR YOUR FAVORITE NEWS SOURCE FOR VITAL WEATHER RELATED INFORMATION.
- ◆ IF FLOODING OCCURS, GET TO HIGHER GROUND. GET OUT OF AREAS SUBJECT TO FLOODING. THIS INCLUDES DIPS, LOW SPOTS, CANYONS, WASHES, ETC.
- ◆ AVOID AREAS ALREADY FLOODED ESPECIALLY IF THE WATER IS FLOWING FAST. DO NOT ATTEMPT TO CROSS FLOWING STREAMS.
- ◆ ROAD BEDS MAY BE WASHED OUT UNDER FLOOD WATERS. NEVER DRIVE THROUGH FLOODED ROADWAYS.
- ◆ DO NOT CAMP OR PARK YOUR VEHICLE ALONG STREAMS AND WASHES, PARTICULARLY DURING THREATENING CONDITIONS.
- ◆ BE ESPECIALLY CAUTIOUS AT NIGHT WHEN IT IS HARDER TO RECOGNIZE FLOOD DANGERS.

WWW.NOAA.GOV



RECORD OF FLOODING ON THE LITTLE MISSOURI RIVER.

PICTURE COURTESY OF NATIONAL GEOLOGICAL SURVEY WWW.NSGS.GOV



## STUDENT OF THE YEAR: JULIANNA HALFORD

The Student of the Year Award is given to an outstanding student who is nominated by his or her peers and selected by faculty from the nominations. The nominees must demonstrate academic achievement and have a GPA of 3.5 or better. The student must also show a commitment to professionalism and service in the field of emergency management. Congratulations to Julianna on achieving this honor.

## Inside this issue:

FROM THE DESK OF....	2
IAEM/EMAT	3
GRADUATE PROGRAM	4
BEACH BUM ON SABBATICAL	5
ALBERT PIKE (CONT.)	5
MEET THE STAFF	6
WHERE ARE THEY NOW	7
GRADUATION LIST	8
PUZZLE	9

FROM THE DESK OF.....



Ed Leachman

The program has continued to grow in both quality and numbers in 2010. This term Emergency Management has a total of 263 majors enrolled in our undergraduate and graduate programs; this is 10 percent growth since fall 2009 and we are very glad to have each of you who are returning and welcome our new majors. In 2010 we have 48 students scheduled to complete their BS degree and 29 scheduled to complete their MS degree. This is truly exciting!

Please join me in welcoming Mr. J.O. Bailey who now is a permanent member of the Emergency Management faculty. J. O. is a great addition to our faculty and I encourage you to drop by his office and say hello. Mr. Bailey is in our newly renovated faculty suite in Dean 107 along with the other faculty who are all enjoying their new digs.

I know many of you have seen the newly renovated EOC in Dean 102. This renovation expanded the EOC to accommodate 30 students and has allowed us to return the space to use as a technology classroom. This new facility offers two important features in addition to the increased space. The first additional benefit includes thin-client computer access to a very powerful virtual server environment that greatly increases the computer capabilities in the EOC. We have also added a

high-definition video system which allows us to conduct video conferences and to capture video during lectures and workshops for playback at a later time.

There are several special events taking place this term that offer great benefit to your learning experience. The first is the Department's "Welcome Back" cookout that was well attended on September 16. I want to thank all the students and faculty for making this a success.. The week of September 28<sup>th</sup> our department co-hosted the annual Statewide Preparedness Conference in Little Rock. This conference provides you the opportunity to network and develop contacts with people working in the profession which can be extremely beneficial in identifying Internship sponsors and ultimately in your job search. Finally I commend our students in their pursuit of scholarships and selection for the IAEM Conference in San Antonio in November. This is an outstanding conference and provides students insight into the current emergency management trends and topics as well as information about the latest tools and technology in emergency management. Just as important, it allows our student representatives to reflect very positively on our Emergency Management undergraduate and graduate programs.

A major organizational addition that you will see over the next several months is the creation of the Center for Preparedness and Recovery within our Department. Tech's administration has established this Center to focus the Department's research and outreach projects that are focused on preparedness and recovery. Grant activities, research projects, research publications, and planning and support projects with both public and private sector organizations will be conducted in the Center. You will be hearing much more about the Center in the near future.

Best wishes for a successful semester!

**“A MAJOR ORGANIZATIONAL ADDITION THAT YOU WILL SEE OVER THE NEXT SEVERAL MONTHS IS THE CREATION OF THE CENTER FOR PREPAREDNESS AND RECOVERY WITHIN OUR**



Mr. Leachman at the Welcome Back Cookout



**MISSION STATEMENT**

IT IS THE MISSION OF THE EMERGENCY MANAGEMENT ACTION TEAM (EMAT) TO PROVIDE NATIONALLY CERTIFIED TRAINING TO THE STUDENTS OF THE EMERGENCY MANAGEMENT DEPARTMENT AT ARKANSAS TECH UNIVERSITY. EMAT IS STRUCTURED TO COMPLIMENT THE CURRICULUM AND TO PREPARE THE STUDENTS FOR THEIR FUTURE CAREERS.

- ◆ STORM SPOTTERS
- ◆ HAZMAT AWS-ADEM
- ◆ RED CROSS-CPR/FIRST AID/AED
- ◆ HAM RADIO OPERATOR
- ◆ ICS 300/400-ADEM
- ◆ SAR TECH III
- ◆ SELF-DEFENSE
- ◆ VOLUNTEER RECEPTION CENTER
- ◆ DONATIONS MANAGEMENT (AID MATRIX)



**OFFICERS**

COORDINATOR– SAMANTHA MINSTER  
 PIO– FAITH NEWTON  
 FINANCE/ADMIN OFFICER– SHANNON CREWS  
 OPS/PLANNING OFFICER– HEATHER FRANKS  
 LOGISTICS OFFICER– ALI RYE  
 SAFETY OFFICER– GARY ANDERSON

EMAT MEETS ON THE SECOND MONDAY OF EACH MONTH AT NOON IN DOC BRYAN ROOM 242



**MISSION STATEMENT**

- ◆ UNIFIES THE VOICE OF EMERGENCY MANAGEMENT STUDENTS EVERYWHERE.
- ◆ GIVES EMERGENCY MANAGEMENT STUDENTS THE ATTENTION NEEDED.
- ◆ PROMOTES BETTER RESOURCES & TOOLS TO EXISTING TRAINING PROGRAMS.
- ◆ CREATES CAREER OPPORTUNITIES FOR STUDENTS IN ALL PARTS OF THE WORLD.
- ◆ INCREASES WORLD-WIDE NETWORKING.
- ◆ INCREASES EDUCATIONAL ACTIVITIES WITHIN THE IAEM-USA STUDENT CHAPTER.
- ◆ INCREASES ALL-SECTOR SPEAKERS AND EDUCATIONAL TRAINING PROGRAMS.
- ◆ DEVELOPS A WORLD-WIDE JOB DATABASE THROUGH NETWORKING WITH ALL IAEM CHAPTERS.
- ◆ WIDENS THE SPECTRUM OF COMMUNITY EDUCATION

**OFFICERS**

PRESIDENT– DONALD MINSTER  
 VICE-PRESIDENT –ERIC SHEPHERD  
 SECRETARY– FAITH NEWTON  
 PIO– CORY BLAIR  
 TREASURER– TIMOTHY BOE



IAEM OFFICERS LEFT TO RIGHT: CORY BLAIR, ERIC SHEPHERD, DONALD MINSTER, TIM BOE, FAITH NEWTON

**IAEM SPEAKER SERIES**



ARTHUR ASHBY– EMERGENCY SERVICES SPECIALIST  
 AUDREY COTTINGHAM– DIRECTOR OF SERVICE DELIVERY  
 HOLLY ODOM- EMERGENCY SERVICES SPECIALIST

IAEM MEETS ON THE THIRD THURSDAY OF EACH MONTH AT 3PM IN DOC BRYAN ROOM 242

### EMHS GRADUATE PROGRAM



DR. GARNER

The EMHS Master's Program grew to new record levels in 2010; 51 students were admitted this year as opposed to the 25 students who joined the program 2009. Seventy five graduate students are taking classes this fall. This fall graduation will bring the total number of EMHS graduate students receiving their Master's Degree to 30; in 2009 the program graduated 17 students. A number of theses are posted on the department's web page under

the graduate program tab as .pdf files. Both the Thesis Option and Practicum Option are now available for students.

Any student interested in the EMHS Graduate Program should contact me. Email – mgarner@atu.edu Phone – 479-356-2159.

**“THIS FALL GRADUATION WILL BRING THE TOTAL NUMBER OF EMHS GRADUATE STUDENTS RECEIVING THEIR MASTER’S DEGREE TO 30”**



DR. GARNER, DR. IHDE, AND TRACY EICHENBERGER AT THE WELCOME BACK COOKOUT.

### CONGRATULATIONS TO THE RECENT GRADUATES OF

### EMERGENCY MANAGEMENT AND HOMELAND SECURITY MASTER OF SCIENCE PROGRAM

- Diaa Alquasairi
- Arthur Ashby
- Bonnie Bunting
- Tabitha Casey
- Jason Dotson
- Chunyu Fung
- Donald Garringer
- Samuel Hugen
- Hallie Nix
- Lauren Reynolds

- Lisa Robles
- Michael Schuller
- Stephen Sims
- Timothy Stover
- Amber Styles-Emberson
- Carol Walton
- Martha Worsham
- Russell Young

## BEACH BUM ON SABBATICAL

J.O Bailey is the newest addition to the faculty of the Emergency Management Department at Arkansas Tech University. A self-proclaimed “beach bum on sabbatical” Mr. Bailey brings with him a passion for teaching, a decorated military background, and a deep knowledge of terrorism. A former captain in the US Army as well as an Army Ranger, Bailey has served as a war fighter, war planner, a reconstructor and served from pre-9/11 until the reconstruction of Baghdad. After military life Bailey worked as a leadership consultant, motivational speaker, and as a graduate assistant at Arkansas Tech, while taking it easy

with his “beach bum” lifestyle. As a member of the faculty he is a specialist in the field of terrorism. In talking with him I asked, “What is the best way for the nation to combat terrorism?” His reply was “The best way to combat terrorism is through the introduction of democracy.” When asked what advice he would give new emergency managers entering into the field at the county and local levels, his reply was, first is to know which groups would target your area, for example is there a high risk for Al Qaeda attacking your loca-

tion, secondly you need to assess the potential value of targets in your area, would a terrorist strike at Arkansas Nuclear One or Arkansas Tech and what would be the potential value of a target militarily as well as the value of it in the eyes of the media, and lastly how much cost would be involved on an attack by specific groups. The Department of Emergency Management would like to extend a warm welcome to our newest faculty member, J.O. Bailey.



J.O. BAILEY

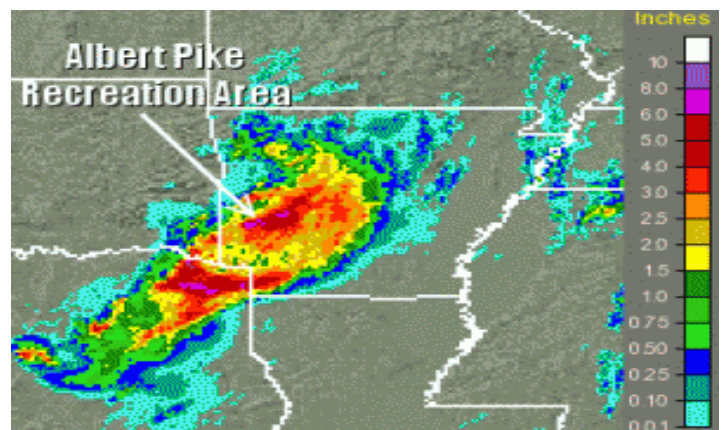
**“MR. BAILEY BRINGS WITH HIM A PASSION FOR TEACHING, A DECORATED MILITARY BACKGROUND, AND A DEEP KNOWLEDGE OF TERRORISM.”**

## ALBERT PIKE (CONTINUED)

Given the location combined with a very strong storm which dumped eight inches of rain an hour added up to the perfect conditions for flash flooding. Over 300 volunteers and professionals from ADEM, the American Red Cross, Salvation Army, National Forest Service as well as state and local police arrived on scene ready to provide support. On Friday with the help of helicopters from the Arkansas National Guard, 30 people were saved from eminent danger. The entire operation took four days as professionals and volunteers continued to search for survivors. Jerry Elizandro, the Emergency Manager for Montgomery County called the operation a “complete success.” As with most operations, communications were

a challenge. Communication with the campers was nearly non-existent because of the remoteness of the area. Cell phone connection was impossible. NOAA weather radio coverage was spotty at best. When the response phase began communications between teams often broke down because of the terrain. Even with ADEM providing two-way radios, satellite phones, and portable cell phone towers communications were not always reliable. In order to make a place like Albert Pike completely safe you would have to take away some of the things that make it great. Adding cell phone coverage and modern convenience would only ruin the reason most of us visit remote out of the way places, to get away from it all. In the end the best defense against a tragedy like this occurring is preparedness of

the campers, in being aware of the location and the current weather at the place they will be visiting.



**THE AMOUNT OF RAINFALL OVER AN HOUR IN INCHES. ALBERT PIKE RECEIVED MORE THAN 8 INCHES AN HOUR.**  
PICTURE COURTESY OF THE NATIONAL WEATHER SERVICE WWW.WEATHER.GOV

MEET THE STAFF

Here's a big welcome to all new and returning emergency management students! As always, our expanding and mutable field brings new opportunities at every turn. For example, I encourage you to learn more about the new Emergency Management Action Team (EMAT) with its diverse and management-oriented training opportunities.

Also, we have instituted a new "Ask a Grad" lecture series, and our first seminar entitled, "Surviving a Lit. Review," was a big success! Approximately 40 students attended, and the department recorded the session on Tegrity so that a URL will be provided to distance students who can then view the presentation. Faculty opened the seminar by outlining the overall graduate thesis process, then two "seasoned" graduate students, Timothy Boe and

BETH GRAY



Denny Foulk, provided an entertaining, yet substantive description of their best practices and lessons learned. Time was provided at the end of the presentations for Q&A about writing and the grad program in general. The series promises to be informative for students and a helpful tool in guiding them through the program.

Another exciting initiative in the works -- a department task force comprised of faculty and graduate students is exploring the implementation of an online emergency management scholarly journal. We have consensus on a name for the journal, *Journal of Preparedness and Recovery*, and have purchased a web domain name: <http://jopar.org/>. Construction on the website has begun. We are currently developing an implementation strategy, submission policy, format requirements, a peer review procedure, and establishing jobs such as executive editor.



FIRST "ASK-A-GRAD" SESSION "SURVIVING A LIT REVIEW"



DR. IHDE

The department is making some great strides in our ability to provide a quality education to all those in our undergraduate and graduate programs. We have made a concerted effort

over the summer to assess our direction and purpose in an effort to maintain a leading position in our emergency management educational endeavors. Opportunities in the field are constantly developing and we, as faculty, are committed to preparing our students to take advantage of those opportunities.

I am excited about the start of a new semester. I am glad to see another student organization this semester to work with our existing one; IAEM is growing, and with that we have another year filled with great speakers. EMAT is just getting started, and has several trainings on the schedule for the students to participate in. Both of these organizations provide valu-



JAMIE EARLS

able externship experience, and since all undergraduate students need a minimum of 150 hours, I hope to see growing involvement. So that I don't fill an entire page with externship information, check out the new Externship web page. Go to [eam.atu.edu](http://eam.atu.edu) and select "externship" on the left side to access current course information. Don't forget; check your email regularly for updates and upcoming events.



TIM BOE



TEE

GRADUATE ASSISTANTS



JULIE HALFORD



TRACY EICHENBERGER

ADMINISTRATIVE SPECIALIST

ADJUNCT PROFESSORS

JASON JACKSON  
 GEORGE FRANKS  
 TABITHA CASEY  
 DOUG BROWN

## WHERE ARE THEY NOW

### BETHANY SANDEFUR

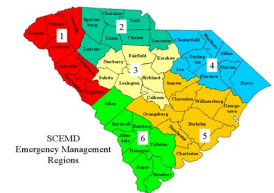
**“THE EDUCATION I RECEIVED AT TECH PROVIDED ME WITH A GREAT FOUNDATION, BUT IT TOOK THE REAL WORLD EXPERIENCE TO TEACH ME HOW TO APPLY THE KNOWLEDGE I GAINED IN THE CLASSROOM. AS EMERGENCY MANAGERS, WE TRULY MUST BE LIFELONG LEARNERS.”**

Bethany Sandefur was the first candidate to graduate from Arkansas Tech University with a masters degree in Emergency Management and Homeland Security. In March of 2008 she moved to South Carolina to accept a position within the South Carolina Emergency Management Division (SCEMD). Since joining the SCEMD she has worked in the Regional Emergency Management Program (REM). She is responsible for 8 counties along the coast of South Carolina including the city of Charleston. Her job as a Regional Emergency Manager is to assist counties with planning, exercises, and responses, along with all daily tasks associ-

ated with emergency management. Her job has includes all four phases of emergency management. Since she has been working with the SCEMD she has worked several incidents including: Tropical Storm Hannah, Horry County wildfires, and with South Carolina’s efforts in helping in the Haiti earthquake.

When asked to give advice to future graduates and undergraduates she had this to say in response. “In the past two and a half years, I have learned that there is a balance between education and experience. Both are valuable in different ways. The education I received at Tech provided me with a great foundation, but it

took the real world experience to teach me how to apply the knowledge I gained in the classroom. As emergency managers, we truly must be lifelong learners. My best advice is to always remember that you don't know everything, and there is always something new to learn. You'll get a great foundation at Tech, but it takes real world experience to truly understand how to apply that knowledge. Good Luck!!”



BETHANY WORKS IN ZONE 5

### ROBERT T. MCGOWEN



BENTON COUNTY EOC DURING A FALL DRILL

Robert McGowen graduated from the undergraduate program in 2009 and is currently enrolled in the masters degree program. He recently was promoted to become the new Benton County Emergency Management Coordinator. He was previously a deputy coordinator. While he was attending Arkansas Tech he was a police officer at Arkansas Tech, Farmington, and Washington County.

As for advice he gives the following: “I think one thing is you still have to continue to want to learn when you exit school and enter the work force. When I first started I did a lot of listening to what people were saying and absorbed it all in. I think of it as a police officer in the fact that you are sent to the police academy for 12 weeks of train-

**“SCHOOL HELPS YOU GET PREPARED FOR THE CAREER YET YOU STILL HAVE A LOT TO LEARN.”**

ing and then you are put on the street for another 12 weeks of training. After this is completed you still have to learn because you still have not encountered everything you will face daily. The same is true in EM school helps you get prepared for the career yet you still have a lot to learn. Not only in this since but also with laws that are every changing and other things you have to keep up with the current events which effect EM as a whole.”

#### CAREER FAIRS AT TECH

- ◆ **OCTOBER 27, 2010**  
**B.I.G. FAIR**
- ◆ **FEBRUARY 24, 2011**  
**EDUCATOR’S FAIR**
- ◆ **MARCH 8, 2011**  
**ENGINEERING FAIR**
- ◆ **APRIL 7, 2011**  
**STUDENT & ALUMNI FAIR**

FOR MORE INFORMATION:  
[HTTP://WWW.ATU.EDU/CAREER/CAREERFAIRS.SHTML](http://www.atu.edu/career/careerfairs.shtml)

## EMERGENCY MANAGEMENT BACHELOR OF SCIENCE GRADUATES

DANNY AKINES  
TIMOTHY BESHEARS  
BRANDY BLAND  
BRITTANY BRADLEY  
CHRISTOPHER BROWN  
MICHAEL BROWN  
CLAY CARROLL  
ERICK COLLIER  
BRAD DONALDSON  
CASSANDRA DUNCAN  
CEDRIC FLEMONS  
KATIE FORD  
JEREMY GAMBLE  
BRENTON GOECKE  
KRISTIN GOFF  
CHARLIE GREER

TIFFANY GRESHAM  
BEAU GUMM  
JULIANNA HALFORD  
BRITTNEY HARRISON  
JOSEPH HIGHTOWER  
JOHN KENNEDY  
WESLEY LAMBERT  
JENNIFER LUKE  
MICHAEL MAGGARD  
ERIC MCCOMBS  
LEROY MCCORMICK  
ROBERT MCGOWEN  
WILLIAM MCKISSACK  
TOBI MILLER  
JUSTIN MURPHREE  
BART NOLAND  
SUSAN NOLAND

THOMAS PHALEN  
PRESTON ROOD  
RICHARD SHUMATE  
KELLEY SOHNS  
ANDREW SOLOMAN  
KYAH SPENCE  
TYLER TAUTON  
SEDLEY TOMLINSON  
MATTHEW VADEN  
JOSHUA VIRDEN  
DUO WANG  
STEPHANIE WHITSON  
MICHAEL WILLIAMS  
TED XIONG  
JESSE YATES

### IMPORTANT DATES

- ◆ OCTOBER 31– NOVEMBER 3  
IAEM CONFERENCE IN SAN  
ANTONIO TEXAS
- ◆ NOVEMBER 8– INVEST IN  
YOURSELF WORKSHOP:  
BUSINESS ETIQUETTE AND  
NETWORKING
- ◆ NOVEMBER 24-29 THANKS-  
GIVING HOLIDAYS
- ◆ NOVEMBER 29– LAST DAY  
TO DROP COURSES WITH A  
“W”
- ◆ DECEMBER 7– READING  
DAY
- ◆ DECEMBER 8-14– FINALS
- ◆ DECEMBER 18– GRADUA-  
TION

### CONDOLENCES



The Department of Emergency Management would like to extend its heartfelt condolences to the family and friends of Justin Collins. His loss will be felt not only by his close friends and family, but also by the entire Department of Emergency Management.

DEPARTMENT OF EMERGENCY MANAGEMENT  
ARKANSAS TECH UNIVERSITY  
DEAN HALL, ROOM 110  
402 WEST “O” STREET  
RUSSELLVILLE, AR 72801  
T: 479-356-2092  
F: 479-356-2091

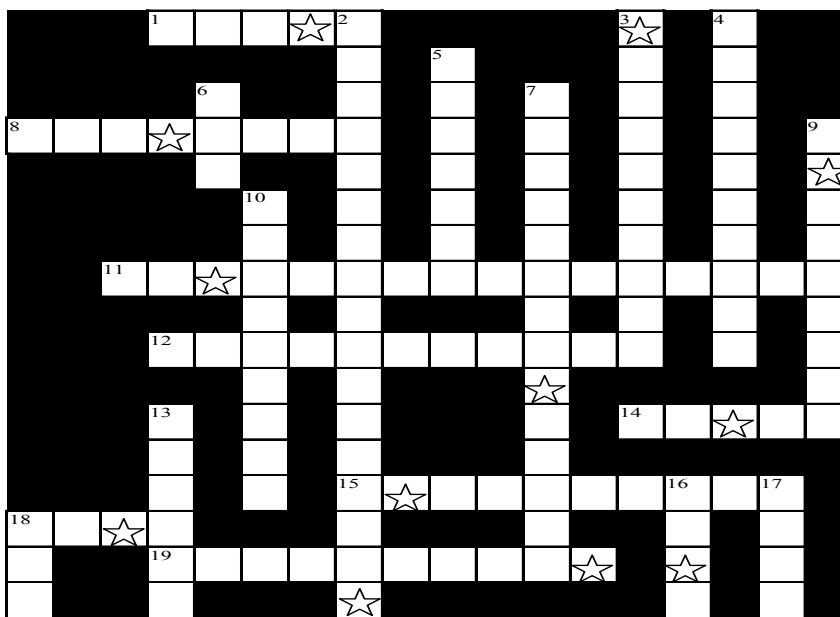
[HTTP://WWW.ATU.EDU/EMERGENCYMANAGEMENT/](http://www.atu.edu/emergencymanagement/)

EDITOR-IN-CHIEF  
JULIANNA HALFORD

WRITER  
ROBERT DONAHOU

### BONUS PUZZLE

Solve the puzzle and e-mail a copy of the completed puzzle along with a suggestion for the newsletter to [jhalford@atu.edu](mailto:jhalford@atu.edu) for a chance to win one of four prizes. The deadline for entries is November 12, 2010. Drawing will be held on November 15 and winners notified via e-mail. To be eligible you must have the correct answers, a suggestion for the newsletter, and be a current student.



Unscramble starred letters.

**Bonus Word** \_\_\_\_\_

- | Across                                  | Down  |
|---|---|
| 1 Number of graduate assistants         | 2 Lifelong learners (2 words)                 |
| 8 First graduate from EMHS program      | 3 Dean 107 (2 words)                          |
| 11 First Aid/CPR (3 words)              | 4 Can carry away a full size SUV (2 words)    |
| 12 Man-made runoff systems (2 words)    | 5 Worked as a police officer                  |
| 14 Journal website                      | 6 Percent of growth in the department         |
| 15 December 18                          | 7 Flash flood river (2 words)                 |
| 18 Meets the second Monday of the month | 9 Tim Boe                                     |
| 19 150 hours                            | 10 Democracy may reduce this                  |
|   | 13 Focuses on research and outreach projects  |
|   | 16 Widens the spectrum of community education |
|   | 17 Provides flash flooding tips               |
|   | 18 Dean room 102                              |