

# I

## GENERAL INFORMATION

Arkansas Tech University was created as a district agricultural school by an act of the Arkansas General Assembly in 1909. In 1925, the General Assembly changed the name from the Second District Agricultural School to Arkansas Polytechnic College, with power to grant degrees. Changing and increased demands for college education in Arkansas caused the Board of Trustees in 1948 to convert from a junior college to a four-year, degree-granting institution. A graduate program leading to the master of education degree was established in 1976. In accordance with an act of the Arkansas General Assembly and by the authority of the State Board of Higher Education, the name of Arkansas Polytechnic College was changed to Arkansas Tech University, effective July 9, 1976. In July, 1979, the University was designated by the State Department of Higher Education and the Governor of the State of Arkansas as the center for the Arkansas Center for Energy, Natural Resources and Environmental Studies. The University has had continuous accreditation in the Higher Learning Commission of the North Central Association of Colleges and Schools since 1930.

Arkansas Tech University is a multi-purpose, state-supported institution of higher education whose primary objective is to provide strong undergraduate and graduate programs and activities, especially for the students and communities in the northwest quadrant of Arkansas, which will enable its graduates to make significant contributions to the economic, social, political, and cultural development of the region, state, nation, and world and to enable each student to pursue personal, professional, and occupational goals. The University is committed to providing high quality educational programs within its five broad areas of emphasis--modern business and industry, professional education, the liberal and fine arts, the physical and life sciences, and information technology and systems. A critical adjunct purpose is the University's obligations to community service and development.

The present mission of Arkansas Tech University is:

\*Arkansas Tech University, a state-supported institution of higher education, is dedicated to nurturing scholastic development, integrity, and professionalism. The University offers a wide range of traditional and innovative programs which provide a solid educational foundation for life-long learning to a diverse community of learners.

In carrying out its mission, Arkansas Tech University offers programs of study leading to the associate degree, baccalaureate degree, master's degree, and educational specialist degree.

\*Approved Board of Trustees 2/28/08

\*The Role and Scope for Arkansas Tech University as approved by the Board of Trustees on July 29, 2000, and defined by the Arkansas Department of Higher Education reads as follows:

## **1. Audiences**

Arkansas Tech University (ATU) is responsible for serving:

- Residents of the northwest quadrant of Arkansas who have completed a high school education and are seeking either a college degree or continuing professional education and residents of the state through specific degree programs and services.
- Employers in the region, both public and private—school districts, health care providers, local governments, and private businesses.
- Economic development interests and entrepreneurs in the region.
- The community and area by providing a broad range of academic and cultural activities and public events.
- Area K-12 schools seeking college general education courses for advanced students.
- Two-year college transfer students.

## **2. Array of Programs and Services**

ATU serves these audiences by offering:

- Certificate and associate degree programs in applied technologies, nursing and allied health.
- Baccalaureate programs in arts and humanities, the natural sciences, and social sciences appropriate to a teaching institution with a predominantly undergraduate student body.
- Baccalaureate and masters programs in the professional fields of communications, information technology, engineering, education, nursing and allied health, and business.
- Services specifically designed to meet the needs of regional economic development (small business development, support for entrepreneurs, problem-solving).

## **3. Special Features**

- Engineering programs, including an associate degree in nuclear engineering, emergency administration and management, geology, and hospitality administration.
- Arkansas Tech University-Ozark campus provides education in associate and certificate programs.

\*Amended 8/1/08

Management and control of Arkansas Tech University are vested by statute in the Board of Trustees as appointed by the Governor with the concurrence of the Arkansas Senate. The central administrative leadership for the University stems from the President, who is directly responsible to the Board of Trustees, and five vice presidents. Academically, the University is organized into seven colleges consisting of twenty-four departments. Each college is administered by a dean and each department by a head. The role of faculty in governance participation is primarily expressed through the structures of the Faculty Senate, Graduate Council, and other standing committees; the will of the student body is reflected through the Student Government Association. Diagrams on pages 8-11 reflect the University's administrative and student government organization and the committee structure for policy determination. \*Up-to-date organizational Charts are maintained at the following link: [http://www.atu.edu/academics/docs/Organizational\\_Charts.pdf](http://www.atu.edu/academics/docs/Organizational_Charts.pdf)

Most of the information needed by faculty members is contained in this handbook and in these publications: *Undergraduate Catalog*, *Graduate Catalog*, *Student Handbook*, and *Financial Policies*.

\*Added 8/1/09

**A H E C B APPROVED DEGREE PROGRAMS**  
**ARKANSAS TECH UNIVERSITY**  
*Academic Year 2011*

<i>Status</i>	<i>Level</i>	<i>Award</i>	<i>CIP 2010</i>	<i>Degree Code</i>	<i>Offered Via Distance</i>	<i>Program Name</i>
A	00	X	00.0000	0010		Undeclared
A	01	CP	51.0904	0015		Emergency Medical Technician, Basic
A	01	CP	51.0904	0017		Emergency Medical Technician, Intermediate
A	01	CP	51.3902	4750		Certified Nursing Assistant
A	02	TC	01.0309	2103		Viticulture
A	02	TC	01.0309	2109		Enology
A	02	TC	12.0401	4420		Cosmetology
A	02	TC	15.0303	4645		Industrial Electronic Technology
A	02	TC	15.0399	4504		Industrial Control Systems
A	02	TC	43.0103	0389		Law Enforcement
A	02	TC	47.0201	4310		Air Conditioning, Heating, & Refrigeration Technology
A	02	TC	47.0603	4330		Collision Repair Technology
A	02	TC	47.0604	4340		Automotive Service Technology
A	02	TC	48.0508	4900		Welding Technology
A	02	TC	51.0716	4729		Health Information Technology, Medical Transcriptionist
A	02	TC	51.0904	4295		EMT/Paramedic
A	02	TC	51.3901	4660		Practical Nursing
A	02	TC	52.0401	4285		Business Technology
A	02	TC	52.1201	4445		Computer Information Systems
A	03	AA	24.0102	0060		General Education
A	03	AA	43.0104	0030		Criminal Justice
A	03	AAS	11.0103	0320		Information Technology
A	03	AAS	12.0504	3120		Culinary Management
A	03	AAS	15.0612	0575		Industrial Systems Technology
A	03	AAS	30.9999	0517		General Technology
A	03	AAS	51.0801	1120		Medical Assistant
A	03	AAS	51.0803	3510		Occupational Therapy Assistant
A	03	AAS	51.0806	0750		Physical Therapy Assistant
A	03	AAS	51.9999	0206		Allied Health
A	03	AAS	52.0401	0307		Business Technology
A	03	AS	19.0706	1010	Y	Early Childhood Education
A	03	ASNT	15.1401	1150		Nuclear Technology
A	05	BA	09.0101	1830		Speech
A	05	BA	09.0401	1560		Journalism
A	05	BA	13.1302	1260		Art Education
A	05	BA	13.1305	9420		English
A	05	BA	13.1306	1445		Foreign Languages Education
A	05	BA	13.1318	1760		Social Studies
A	05	BA	13.1331	9830		Speech
A	05	BA	16.0101	1440		Foreign Language
A	05	BA	23.0101	1420		English
A	05	BA	24.0102	1455		General Studies
A	05	BA	30.2001	1540		International Studies
A	05	BA	42.0101	1710		Psychology
A	05	BA	45.1001	1690		Political Science

Wednesday, August 3, 2011

A-Active, D-Discontinued, I-Inactive, P-Phase Out

**A H E C B APPROVED DEGREE PROGRAMS**  
**ARKANSAS TECH UNIVERSITY**  
*Academic Year 2011*

<i>Status</i>	<i>Level</i>	<i>Award</i>	<i>CIP 2010</i>	<i>Degree Code</i>	<i>Offered Via Distance</i>	<i>Program Name</i>
A	05	BA	45.1101	1780		Sociology
A	05	BA	50.0701	1250		Art
A	05	BA	50.0901	1630		Music
A	05	BA	51.2314	1740		Rehabilitation Science
A	05	BA	54.0101	1510		History
A	05	BA	54.0105	5440		Public History
A	05	BFA	13.1305	2040		Creative Writing
A	05	BFA	23.1302	2030		Creative Writing
A	05	BME	13.1312	1640		Music Education
A	05	BPS	30.9999	1871	Y	Professional Studies
A	05	BS	01.0102	2220		Agriculture Business
A	05	BS	03.0601	2590		Fisheries & Wildlife Biology
A	05	BS	11.0101	2410		Computer Science
A	05	BS	11.0103	5285		Information Technology
A	05	BS	11.0501	2797		Information Systems
A	05	BS	13.1203	2910		Middle Level Education
A	05	BS	13.1210	2440	Y	Early Childhood Education
A	05	BS	13.1301	3270		Agricultural Education
A	05	BS	13.1303	2340		Business Education
A	05	BS	13.1311	9870		Mathematics
A	05	BS	13.1314	2680		Health & Physical Education
A	05	BS	13.1316	9010		Physical Science & Earth Science
A	05	BS	13.1322	9300		Life Science & Earth Science
A	05	BS	14.1201	2485		Engineering Physics
A	05	BS	26.0101	2300		Biology
A	05	BS	27.0101	2870		Mathematics
A	05	BS	31.0301	2970		Recreation & Park Administration
A	05	BS	40.0101	3010		Physical Science
A	05	BS	40.0501	2350		Chemistry
A	05	BS	40.0601	2660		Geology
A	05	BS	40.0801	3040		Physics
A	05	BS	40.0806	3060		Nuclear Physics
A	05	BS	43.0302	2490	Y	Emergency Administration & Management; also at MSCC
A	05	BS	51.0706	2700		Health Information Management
A	05	BS	51.1005	2890		Medical Technology
A	05	BS	52.0901	2760		Hospitality Administration
A	05	BSBA	52.0201	2320		Management & Marketing
A	05	BSBA	52.0301	2200		Accounting
A	05	BSBA	52.0601	2460		Economics & Finance
A	05	BSEE	14.1001	4140		Electrical Engineering
A	05	BSME	14.1901	4230		Mechanical Engineering
A	05	BSN	51.3801	4240		Nursing
A	07	MA	09.0702	5395		Multi-Media Journalism
A	07	MA	13.1401	1401		Teaching English to Speakers of Other Languages
A	07	MA	16.0905	5480		Spanish
A	07	MA	23.0101	5310		English

Wednesday, August 3, 2011

A-Active, D-Discontinued, I-Inactive, P-Phase Out

**A H E C B APPROVED DEGREE PROGRAMS**  
**ARKANSAS TECH UNIVERSITY**  
*Academic Year 2011*

<i>Status</i>	<i>Level</i>	<i>Award</i>	<i>CIP 2010</i>	<i>Degree Code</i>	<i>Offered Via Distance</i>	<i>Program Name</i>
A	07	MA	54.0101	5360		History
A	07	MAT	13.0101	6740		Teaching
A	07	ME	14.0101	6520		Master of Engineering
A	07	MEd	13.0401	5665		Educational Leadership
A	07	MEd	13.0501	5675		Instructional Technology
A	07	MEd	13.1101	6680		School Counseling & Leadership
A	07	MEd	13.1202	5680		Elementary Education
A	07	MEd	13.1299	5755		Instructional Improvement
A	07	MEd	13.1305	5690		English
A	07	MEd	13.1314	5820		Physical Education
A	07	MEd	13.9999	3975		Teaching, Learning, & Leadership
A	07	MLA	24.0101	5960		Liberal Arts
A	07	MS	03.0601	6225		Fisheries & Wildlife Biology
A	07	MS	11.0103	6285		Information Technology
A	07	MS	13.1102	5615	Y	College Student Personnel Services
A	07	MS	42.0101	6180		Psychology
A	07	MS	43.0302	6490	Y	Emergency Management and Homeland Security; also at MSCC
A	07	MS	51.0706	2701		Health Informatics
A	07	MSN	51.3802	7080		Nursing
A	08	EdS	13.0401	5120		Educational Leadership
P	02	TC	15.0399	4510		Electronics Technology
D	02	TC	12.0401	4421		Cosmetology Teacher Training
D	02	TC	15.0612	4644		Automation Maintenance Technology
D	02	TC	15.0699	4646		Applied Laboratory Technology
D	02	TC	15.1202	4505		Electronics, Digital
D	02	TC	22.0301	4705		Business Technology, Legal Secretary
D	02	TC	47.0303	4600		Industrial Plant Maintenance
D	02	TC	47.0604	4355		Advanced Automotive Service & Technology
D	02	TC	51.0708	4730		Medical Transcription
D	02	TC	51.0904	4520		Basic Emergency Medical Technician, (EMT)
D	03	AAS	15.0303	0460		Industrial Electronic Technology
D	03	AAS	47.0303	0570		Industrial Plant Maintenance
D	03	AS	15.0999	1140		Mining & Minerals Technology
D	03	AS	52.0401	1200		Secretarial Science
D	05	BA	13.1399	3902		Journalism
D	05	BS	13.1202	2470		Elementary Education; also at Westark UC
D	05	BS	13.1323	3720		Chemistry
D	05	BS	30.1801	2920		Natural Science
D	05	BS	31.0301	3130		Recreation Administration
D	05	BSEG	14.0101	2480		Engineering
D	07	MEd	13.1311	5790		Mathematics
D	07	MEd	13.1312	5810		Music Education
D	07	MEd	13.1318	5860		Social Studies
D	07	MSE	13.1004	6830		Gifted & Talented

Wednesday, August 3, 2011

A-Active, D-Discontinued, I-Inactive, P-Phase Out

**Arkansas Tech University**  
**Organizational Units of Instruction, Research and Public Service**

College of Applied Sciences

Department of Agriculture  
Department of Computer and Information Science  
Department of Electrical Engineering  
Department of Emergency Management  
Department of Mechanical Engineering  
Department of Parks, Recreation, and Hospitality  
Administration

College of Arts and Humanities

Department of Art  
Department of Behavioral Sciences  
Department of English and World Languages  
Department of History and Political Science  
Department of Music  
Department of Speech, Theatre, and  
Journalism

College of Business

Department of Accounting and Economics  
Department of Management and Marketing  
Arkansas Small Business and Technology  
Development Center

College of Education

Center for Teaching and Learning  
Department of College Student Personnel  
Department of Curriculum and Instruction  
Department of Health and Physical Education

College of Natural and Health Sciences

Department of Biological Sciences  
Department of Mathematics  
Department of Nursing  
Department of Physical Sciences

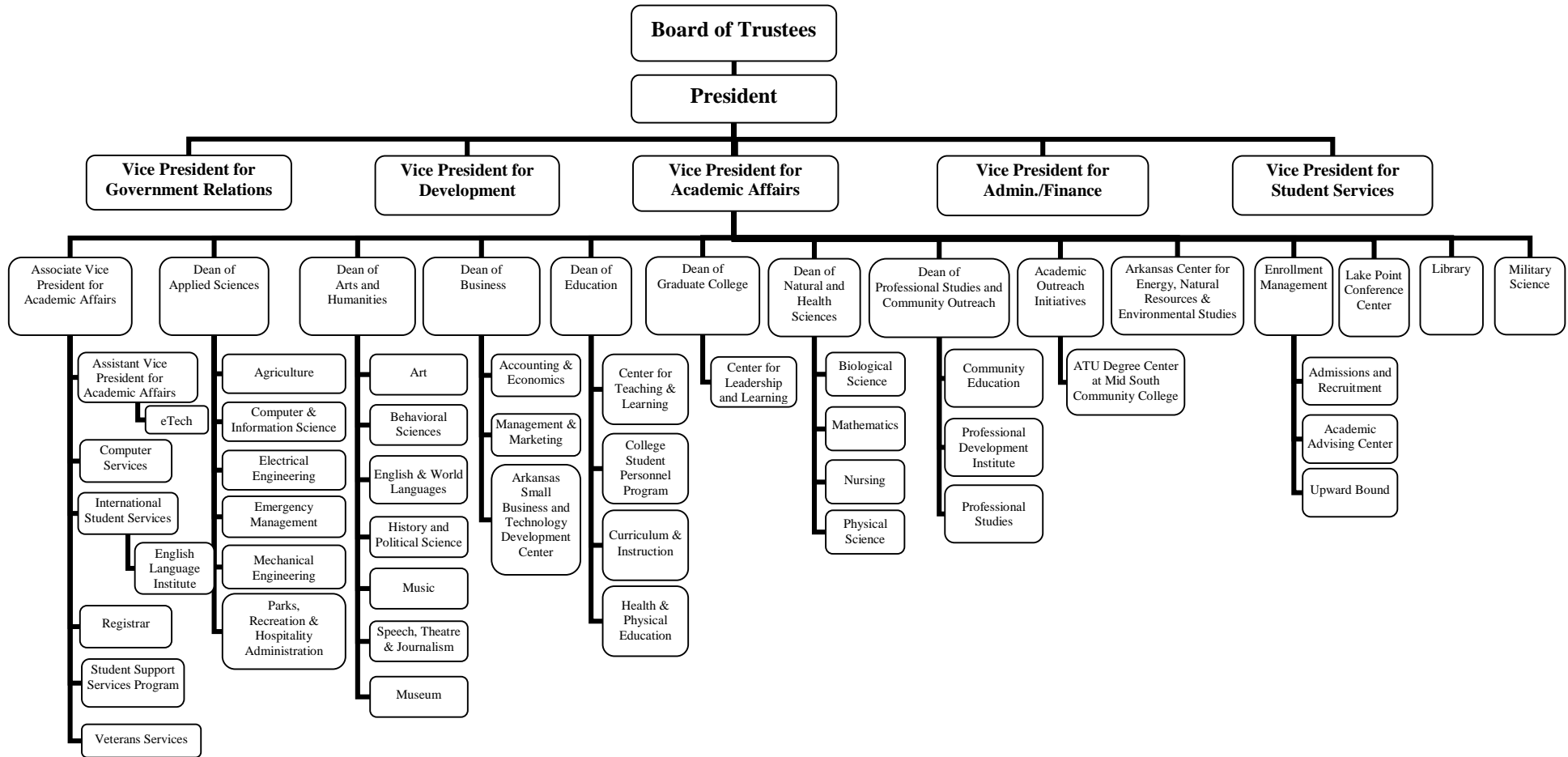
College of Professional Studies and Community

Outreach  
Department of Professional Studies  
Professional Development Institute

Graduate College

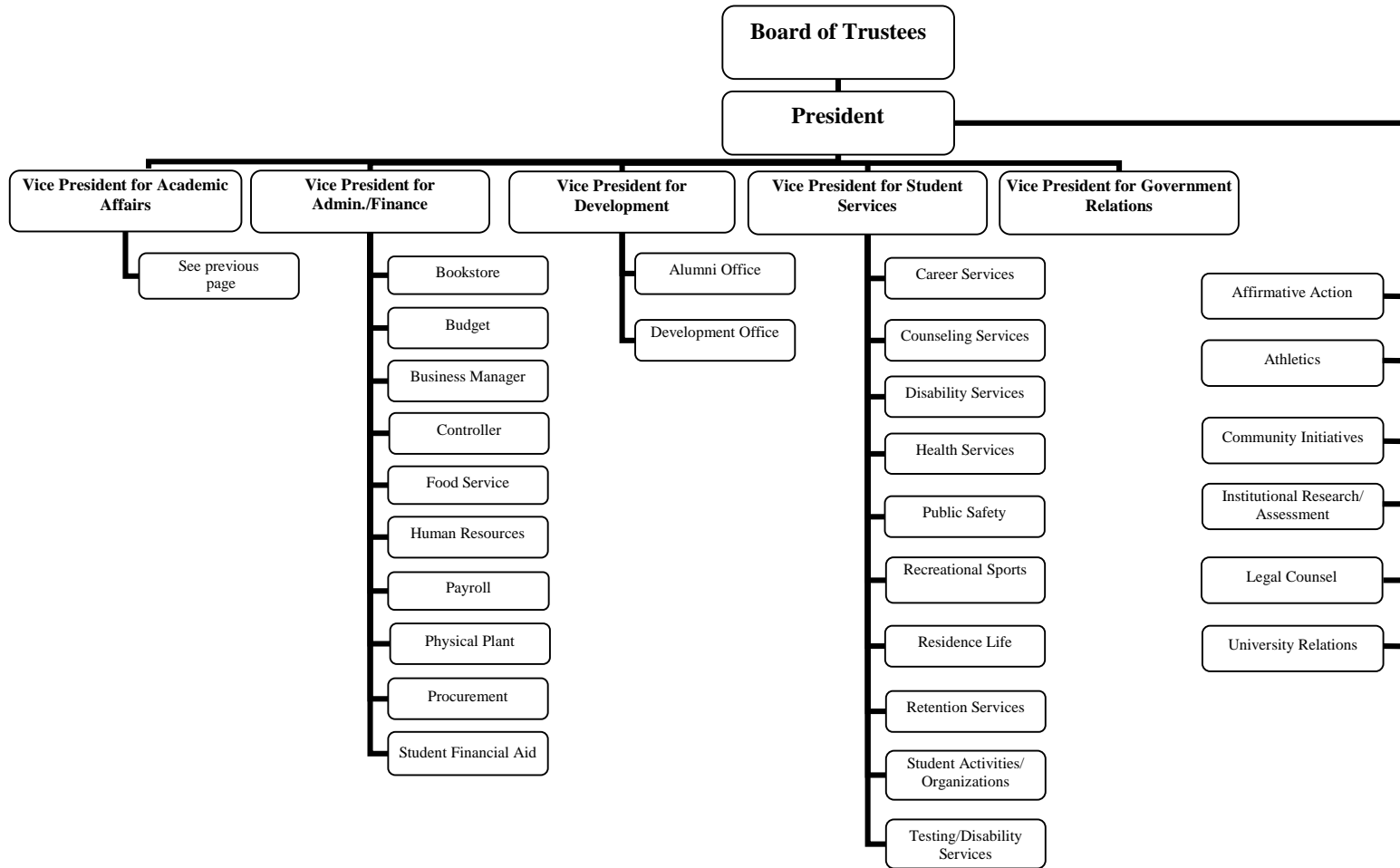
Center for Leadership and Learning  
Arkansas Center for Energy, Natural  
Resources, and Environmental Studies  
Crabaugh Communications Center  
English Language Institute  
eTech  
Library and Technology  
Museum

# ADMINISTRATIVE ORGANIZATIONAL CHART

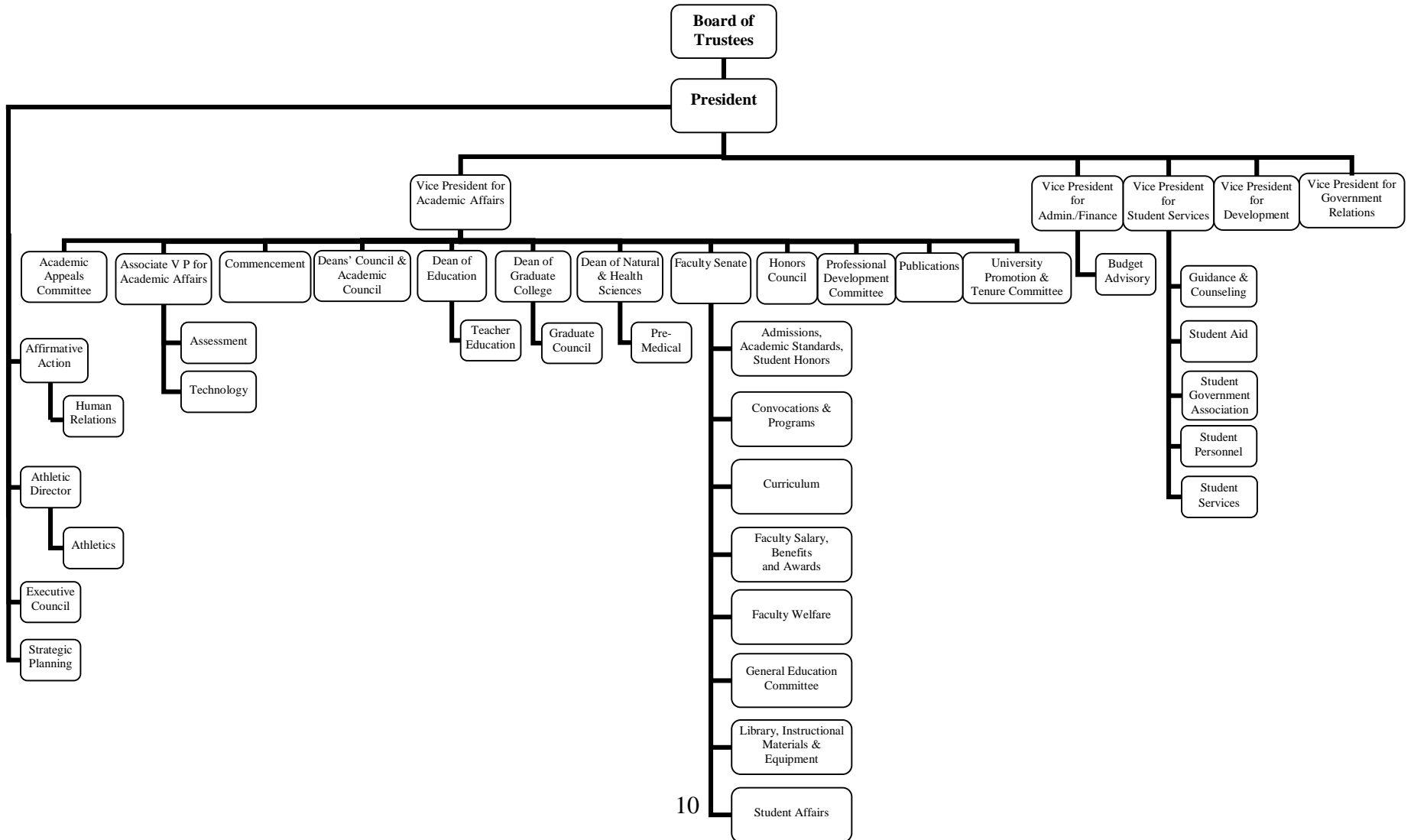


Continued on next page

# ADMINISTRATIVE ORGANIZATIONAL CHART



# COMMITTEE STRUCTURE FOR POLICY DETERMINATION



## STUDENT SERVICES ORGANIZATION STRUCTURE

