

I

GENERAL INFORMATION

Arkansas Tech University was created as a district agricultural school by an act of the Arkansas General Assembly in 1909. In 1925, the General Assembly changed the name from the Second District Agricultural School to Arkansas Polytechnic College, with power to grant degrees. Changing and increased demands for college education in Arkansas caused the Board of Trustees in 1948 to convert from a junior college to a four-year, degree-granting institution. A graduate program leading to the master of education degree was established in 1976. In accordance with an act of the Arkansas General Assembly and by the authority of the State Board of Higher Education, the name of Arkansas Polytechnic College was changed to Arkansas Tech University, effective July 9, 1976. In July, 1979, the University was designated by the State Department of Higher Education and the Governor of the State of Arkansas as the center for the Arkansas Center for Energy, Natural Resources and Environmental Studies. The University has had continuous accreditation in the Higher Learning Commission of the North Central Association of Colleges and Schools since 1930.

Arkansas Tech University is a multi-purpose, state-supported institution of higher education whose primary objective is to provide strong undergraduate and graduate programs and activities, especially for the students and communities in the northwest quadrant of Arkansas, which will enable its graduates to make significant contributions to the economic, social, political, and cultural development of the region, state, nation, and world and to enable each student to pursue personal, professional, and occupational goals. The University is committed to providing high quality educational programs within its five broad areas of emphasis--modern business and industry, professional education, the liberal and fine arts, the physical and life sciences, and information technology and systems. A critical adjunct purpose is the University's obligations to community service and development.

The present mission of Arkansas Tech University is:

Arkansas Tech University, founded in 1909, is a multi-purpose, state-supported institution of higher education dedicated to providing an opportunity for higher education to the people of Arkansas and to serving the intellectual and cultural needs of the region in which it is located. The University offers a variety of programs committed to excellence in undergraduate and graduate studies. These programs are designed to prepare students to meet the demands of an increasingly competitive and intellectually challenging future by providing opportunities for intellectual growth, skill development, and career preparation. The institution monitors student mastery of general education and specialized studies, retention and graduation rates, and quality of teaching and academic programs to verify and facilitate demonstrable improvements in student knowledge and skills between entrance and graduation.

The basis for the student's intellectual growth and scholarly skill development is the general education program, which provides the context for more advanced and specialized studies and the foundation for life-long learning. The general education curriculum is designed to provide university-level experiences that engender capabilities in communication, abstract inquiry, critical thinking, analyzing data, and logical reasoning; an understanding of scientific inquiry, global issues, historical perspectives, literary and philosophical ideas, and social and governmental processes; the development of ethical perspectives; and an appreciation for fine and performing arts.

The University provides a range of specialized studies to prepare students to enter career fields or to continue their education at the post-graduate level. Specialized studies are offered within several areas of emphasis: business, professional education, liberal and fine arts, physical and life sciences, information technology, engineering, and applied sciences. Graduate work leading to the master's degree in selected disciplines provides advanced, specialized education which strengthens the academic and professional competence of students and enhances their capacities for scholarly inquiry and research.

The primary function of the University is teaching. Scholarly research and other professional activities of the faculty, continuing education, and community service are encouraged, promoted, and supported. In keeping with its focus on teaching, the University seeks to recruit, develop, and retain faculty who are dedicated to quality teaching and providing dynamic classroom learning experiences that integrate theory and practice. The institution values academic freedom and the concept of shared governance. Faculty and student organizations such as the Faculty Senate, Graduate Council, and the Student Government Association participate in university governance by making policy recommendations. Leadership and management of the University is the responsibility of the President. Governance of the institution is the responsibility of the Board of Trustees.

In carrying out its mission, Arkansas Tech University offers programs of study leading to the associate degree, baccalaureate degree, master's degree, and educational specialist degree.

The Role and Scope for Arkansas Tech University as approved by the Board of Trustees on July 29, 2000, and defined by the Arkansas Department of Higher Education reads as follows:

Arkansas Tech University is an institution dedicated to quality undergraduate instruction in addition to masters and specialist degree programs in selected fields of study. Tech strives to provide a challenging and stimulating academic environment which fosters the intellectual development of students and faculty members. Programs are designed to prepare students for a challenging and competitive future by providing opportunities for intellectual growth, skill development, and career preparation. With instruction as its primary focus and in keeping with a strong liberal arts core, Tech will continue to provide educational opportunities to students who value the interaction and learning that Tech's teaching environment can foster. In addition, through the selective use of instructional technology, distance education, and other methodology, Tech will make its programs of study available to individuals who otherwise would not have access to quality programs. Attachment A (pages 4-6) lists the certificate programs and associate, bachelors and graduate degree programs recognized by the Board to be offered by Tech in carrying out its instructional role and scope.

Arkansas Tech University provides a variety of services to the general public, with special emphasis on professional development, improvement of public education, and support to social services. Activities are carried out through direct services to groups and individuals, as well as through partnerships with business and industry, school districts, governmental agencies, and community organizations. Many of these activities assist people in western Arkansas and the Arkansas River Valley. The Professional Development Institute and the Center for Leadership and Learning are two examples of valuable service activities being provided.

Scholarly research, continuing education, and other professional activities of the faculty are encouraged, promoted, and supported. Scholarship strengthens and complements the teaching emphasis at Arkansas Tech University by enhancing the curriculum, supporting

instruction, and responding to the economic development needs and opportunities of Arkansas. Through innovative initiatives such as the Arkansas Center for Energy, Natural Resources, and Environmental Studies and key undergraduate and graduate programs, Tech actively promotes the participation of students and the community in research activities.

Attachment B (page 7) lists the organizational units approved for Arkansas Tech University to carry out its instructional, public service, and research role and scope.

Management and control of Arkansas Tech University are vested by statute in the Board of Trustees as appointed by the Governor with the concurrence of the Arkansas Senate. The central administrative leadership for the University stems from the President, who is directly responsible to the Board of Trustees, and *five vice presidents. Academically, the University is organized into seven schools consisting of *twenty-four departments. Each school is administered by a dean and each department by a head. The role of faculty in governance participation is primarily expressed through the structures of the Faculty Senate, Graduate Council, and other standing committees; the will of the student body is reflected through the Student Government Association. Diagrams on pages 8-11 reflect the University's administrative and student government organization and the committee structure for policy determination.

Most of the information needed by faculty members is contained in this handbook and in these publications: *Undergraduate Catalog*, *Graduate Catalog*, *Student Handbook*, and *Financial Policies*.

*Updated 8/1/07

A H E C B APPROVED DEGREE PROGRAMS
ARKANSAS TECH UNIVERSITY
Academic Year 2007

<u>Status</u>	<u>Level</u>	<u>Award</u>	<u>2000 CIP</u>	<u>Degree Code</u>	<u>Program Name</u>
A	01	CP	51.0904	0015	Emergency Medical Technician – Basic
A	01	CP	51.0904	0017	Emergency Medical Technician-Intermediate
A	01	CP	51.1614	4750	Certified Nurse's Assistant
A	02	TC	12.0401	4420	Cosmetology
A	02	TC	15.0303	4645	Industrial Electronic Technology
A	02	TC	15.0399	4504	Industrial Control Systems
A	02	TC	43.0103	0389	Law Enforcement
A	02	TC	47.0201	4310	Air Conditioning & Refrigeration
A	02	TC	47.0603	4330	Collision Repair Technology
A	02	TC	47.0604	4340	Automotive Service & Technology
A	02	TC	48.0508	4900	Welding Technology
A	02	TC	51.0708	4730	Medical Transcription
A	02	TC	51.0716	4729	Business Technology – Medical Transcriptionist
A	02	TC	51.0904	4295	EMT/Paramedic
A	02	TC	51.1613	4660	Practical Nursing
A	02	TC	52.0401	4285	Business Technology
A	02	TC	52.1201	4445	Computer information Systems
A	03	AS	11.0103	0320	Information Technology
A	03	AAS	15.0612	0575	Industrial Systems Technology
A	03	ASNT	15.1401	1150	Nuclear Technology
A	03	AS	19.0706	1010	Early Childhood Education (also by distance)
A	03	AA	24.0102	0060	General Studies
A	03	AAS	30.9999	0517	General Technology
A	03	AA	43.0104	0030	Criminal Justice
A	03	AS	51.0801	1120	Medical Assistant
A	03	AAS	51.9999	0206	Allied Health
A	03	AAS	52.0401	0307	Business Technology
A	05	BS	01.0102	2220	Agricultural Business
A	05	BA	09.0401	1560	Journalism
A	05	BS	11.0101	2410	Computer Science (also at Kingston College)
A	05	BS	11.0103	5285	Information Technology
A	05	BS	11.0501	2797	Information Systems
A	05	BS	13.1203	2910	Middle Level Education
A	05	BS	13.1210	2440	Early Childhood Education (also by distance)
A	05	BA	13.1302	1260	Art Education
A	05	BS	13.1303	2340	Business Education
A	05	BA	13.1305	9420	English
A	05	BFA	13.1305	2040	Creative Writing
A	05	BA	13.1306	1445	Foreign Languages Education
A	05	BS	13.1311	9870	Mathematics
A	05	BME	13.1312	1640	Music Education
A	05	BS	13.1314	2680	Health & Physical Education

Thursday, May 24, 2007

A H E C B APPROVED DEGREE PROGRAMS
ARKANSAS TECH UNIVERSITY
Academic Year 2007

<u>Status</u>	<u>Level</u>	<u>Award</u>	<u>2000 CIP</u>	<u>Degree Code</u>	<u>Program Name</u>
A	05	BS	13.1316	9010	Physical Science & Earth Science
A	05	BA	13.1318	1760	Social Studies
A	05	BS	13.1322	9300	Life Science & Earth Science
A	05	BS	13.1323	3720	Chemistry
A	05	BA	13.1331	9830	Speech
A	05	BSEE	14.1001	4140	Electrical Engineering
A	05	BS	14.1201	2485	Engineering Physics
A	05	BSME	14.1901	4230	Mechanical Engineering
A	05	BA	16.0101	1440	Foreign Language
A	05	BA	23.0101	1420	English
A	05	BFA	23.0501	2030	Creative Writing
A	05	BA	23.1001	1830	Speech
A	05	BA	24.0102	1455	General Studies
A	05	BS	26.0101	2300	Biology
A	05	BS	26.1307	2590	Fisheries & Wildlife Biology
A	05	BS	27.0101	2870	Mathematics (also at Kingston College)
A	05	BA	30.2001	1540	International Studies
A	05	BPS	30.9999	1871	Professional Studies
A	05	BS	31.0301	2970	Recreation & Park Administration
A	05	BS	40.0101	3010	Physical Science
A	05	BS	40.0501	2350	Chemistry
A	05	BS	40.0601	2660	Geology
A	05	BA	42.0101	1710	Psychology
A	05	BS	43.9999	2490	Emergency Administration & Management (also by distance)
A	05	BSBA	45.0601	2460	Economics & Finance
A	05	BA	45.1101	1780	Sociology
A	05	BA	50.0701	1250	Art
A	05	BA	50.0901	1630	Music
A	05	BS	51.0706	2700	Health Information Management
A	05	BS	51.1005	2890	Medical Technology
A	05	BSN	51.1601	4240	Nursing
A	05	BA	51.2399	1740	Rehabilitation Science
A	05	BSBA	52.0201	2320	Management & Marketing
A	05	BSBA	52.0301	2200	Accounting
A	05	BS	52.0901	2760	Hospitality Administration (also at Kingston College)
A	05	BA	54.0101	1510	History & Political Science
A	07	MA	09.0102	5395	Multi-Media Journalism
A	07	MS	11.0103	6285	Information Technology
A	07	MED	13.0401	5665	Educational Leadership
A	07	MED	13.0501	5675	Instructional Technology (also at Kingston College)
A	07	MSE	13.1004	6830	Gifted & Talented
A	07	MED	13.1101	6680	School Counseling & Leadership
A	07	MS	13.1102	5615	College Student Personnel (also by distance)
A	07	MED	13.1202	5680	Elementary Education (early childhood option)

Thursday, May 24, 2007

A H E C B APPROVED DEGREE PROGRAMS
ARKANSAS TECH UNIVERSITY
Academic Year 2007

<u>Status</u>	<u>Level</u>	<u>Award</u>	<u>2000 CIP</u>	<u>Degree Code</u>	<u>Program Name</u>
A	07	MED	13.1299	5755	Instructional Improvement (also at Kingston College)
A	07	MED	13.1305	5690	English
A	07	MED	13.1311	5790	Mathematics
A	07	MED	13.1314	5820	Physical Education (also at Kingston College)
A	07	MED	13.1318	5860	Social Studies
A	07	MA	13.1401	1401	Teaching English to Speakers of Other Languages
A	07	MED	13.9999	3975	Teaching, Learning, & Leadership
A	07	ME	14.0101	6520	Master of Engineering
A	07	MA	16.0905	5480	Spanish
A	07	MA	23.0101	5310	English
A	07	MLA	24.0101	5960	Liberal Arts
A	07	MS	26.1307	6225	Fisheries & Wildlife Biology
A	07	MS	42.0101	6180	Psychology
A	07	MS	43.9999	6490	Emergency Management and Homeland Security
A	07	MA	54.0101	5360	History
A	08	EDS	13.0401	5120	Educational Leadership
D	02	TC	12.0401	4421	*Cosmetology Teacher Training
D	02	TC	15.1202	4505	*Electronics – Digital
D	02	TC	22.0301	4705	*Business Technology – Legal Secretary
D	02	TC	47.0604	4355	*Advanced Automotive Service & Technology
D	02	TC	51.0904	4520	*Basic EMT
D	03	AS	15.0999	1140	Mining & Minerals Technology
D	03	AS	52.0401	1200	Secretarial Science
D	05	BA	13.1399	3902	Journalism
D	05	BS	30.1801	2920	Natural Science
D	05	BS	31.0301	3130	Recreation Administration
D	07	MED	13.1312	5810	Music Education
I	02	TC	15.0699	4646	Applied Laboratory Technology
I	02	TC	47.0303	4600	Industrial Plant Maintenance
I	03	AAS	15.0303	0460	Industrial Electronic Technology
I	03	AAS	47.0303	0570	Industrial Plant Maintenance
I	05	BSEG	14.0101	2480	Engineering
P	02	TC	15.0399	4510	Electronics Technology
P	02	TC	15.0612	4644	Automation Maintenance Technology
P	05	BS	13.1202	2470	Elementary Education (also Through Westark UC)

Attachment B

Arkansas Tech University Organizational Units of Instruction, Research and Public Service

School of Business

- Department of Accounting
- Department of Business and Economics

School of Education

- Department of Curriculum and Instruction
- Department of Health and Physical Education
- Center for Leadership and Learning
- Department of College Student Personnel

School of Liberal and Fine Arts

- Department of Art
- Department of Behavioral Sciences
- Department of English
- Department of Foreign Languages and International Studies
- Department of Music
- Department of Social Sciences and Philosophy
- Department of Speech, Theatre, and Journalism

School of Physical and Life Sciences

- Department of Biological Sciences
- Department of Nursing
- Department of Physical Sciences

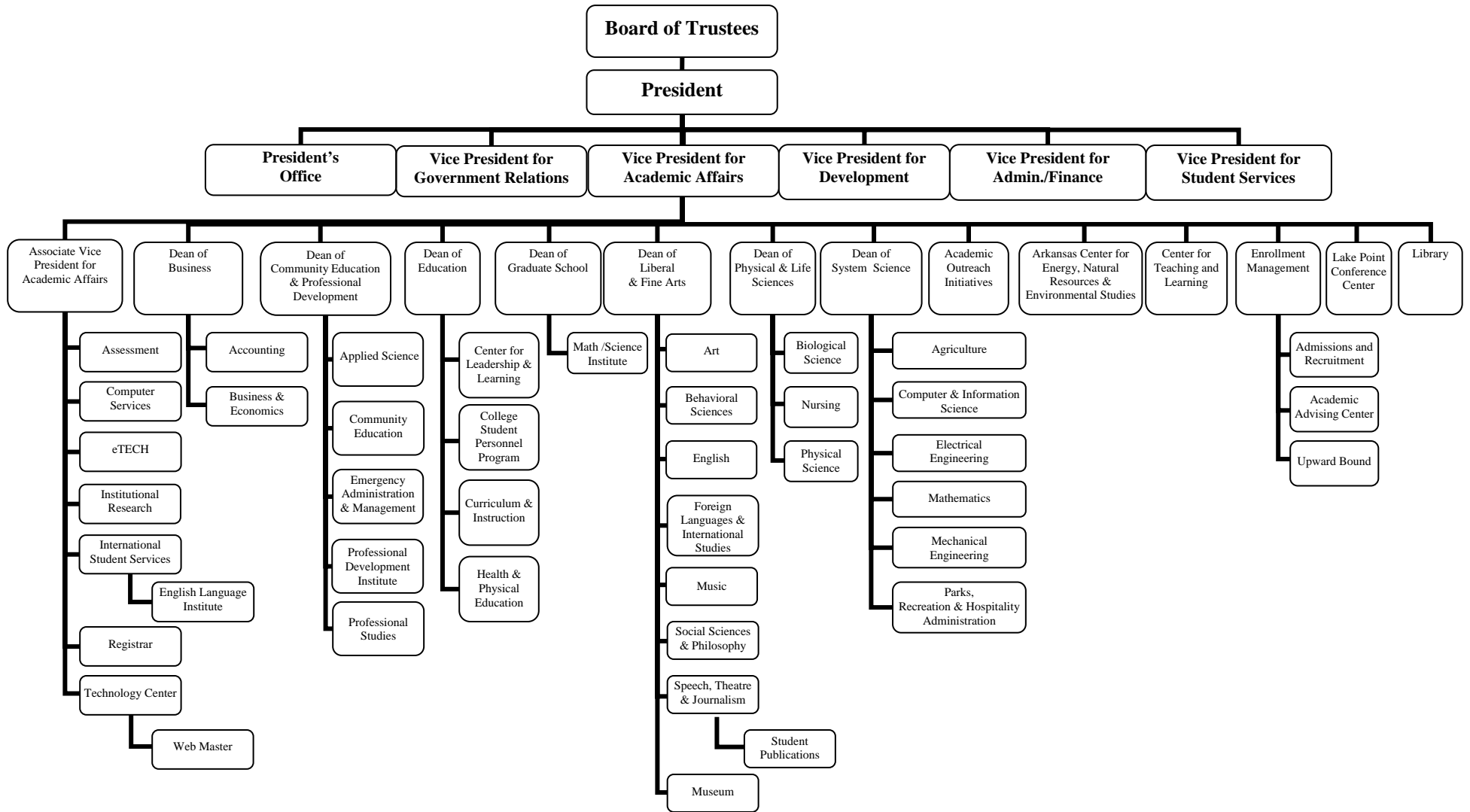
School of Systems Science

- Department of Agriculture
- Department of Computer and Information Science
- Department of Electrical Engineering
- Department of Mechanical Engineering
- Department of Mathematics
- Department of Parks, Recreation, and Hospitality Administration

Graduate School

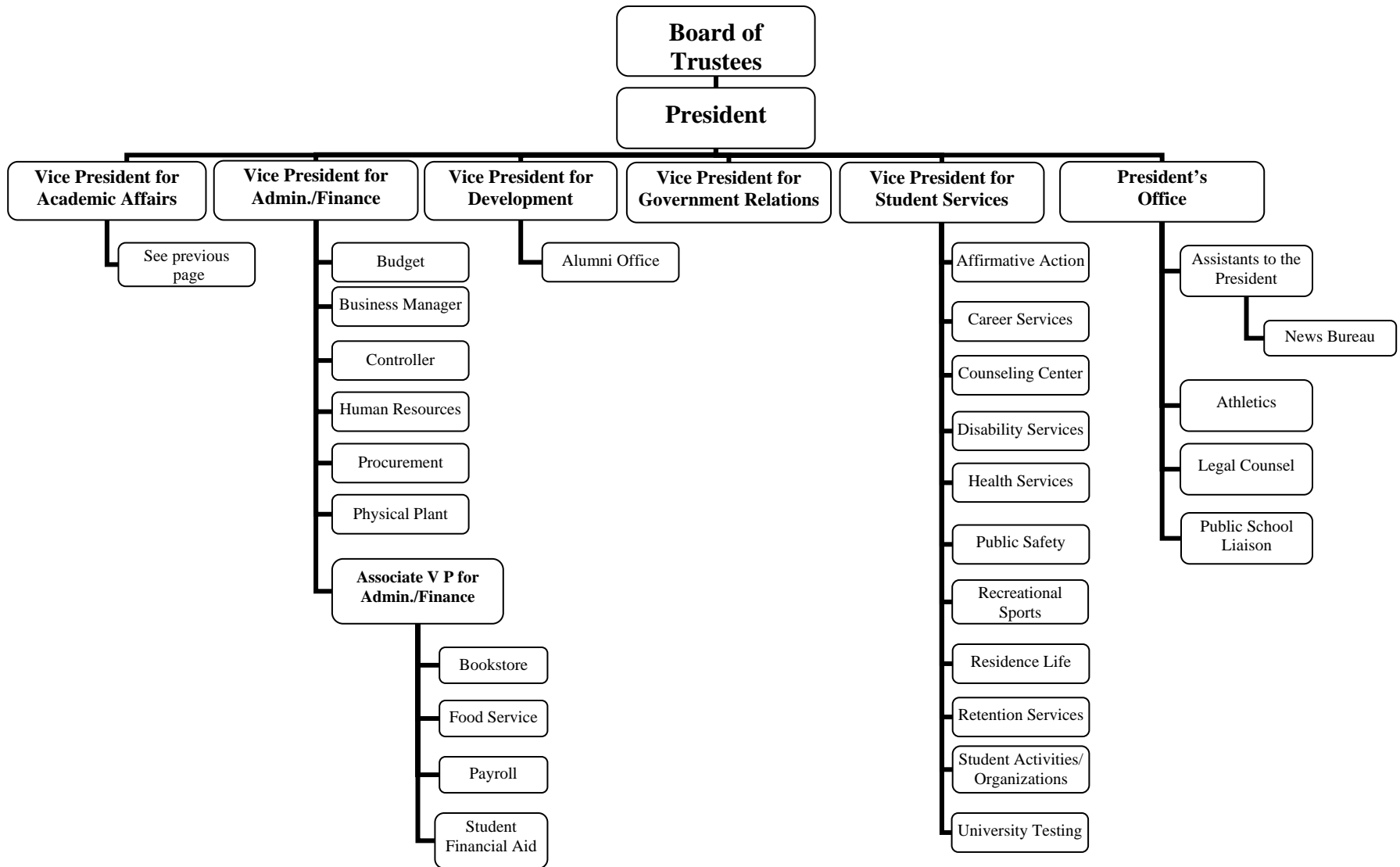
- School of Community Education and Professional Development
 - Department of Emergency Administration and Management
 - Department of Professional Studies
 - Professional Development Institute
- Arkansas Center for Energy, Natural Resources, and Environmental Studies
- Library and Technology Center
- Math and Science Institute
- Center for Teaching and Learning
- Museum
- Crabaugh Communications Center
- eTECH
- English Language Institute

ADMINISTRATIVE ORGANIZATIONAL CHART

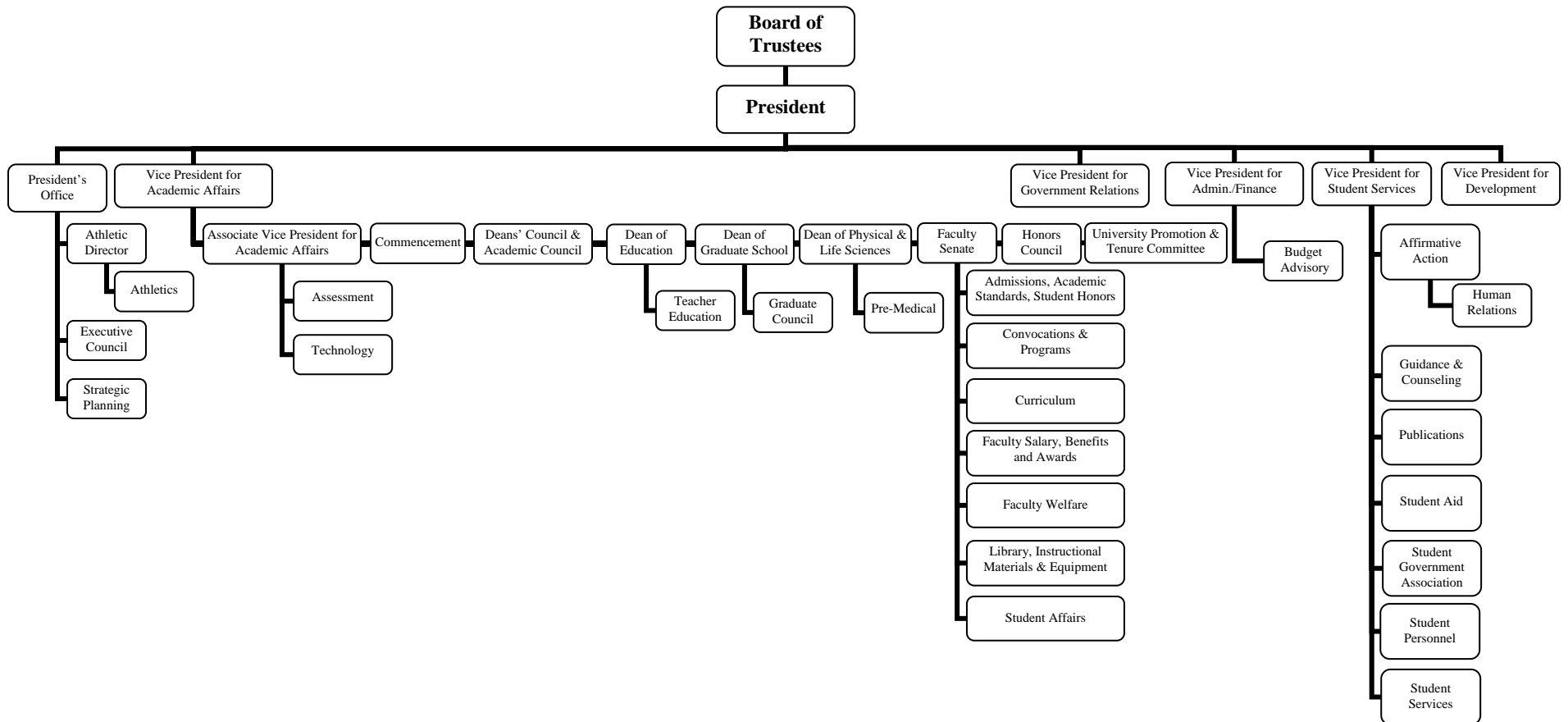


Continued on next page

ADMINISTRATIVE ORGANIZATIONAL CHART



COMMITTEE STRUCTURE FOR POLICY DETERMINATION



STUDENT SERVICES ORGANIZATION STRUCTURE

